



IP/SMS receiver RL14

User Manual v160809

UAB TRIKDIS
Draugystės g. 17,
LT-51229 Kaunas
Tel.: +370 37 408040
Fax: + 370 37 760554
Email: info@trikdis.lt
www.trikdis.lt

Contents

I.	Safety requirements	3
II.	Warranty.....	3
III.	About receiver	4
IV.	Receiver functionality.....	4
V.	Technical parameters	5
VI.	Equipment	5
VII.	Receiver elements.....	6
A.	Front view and light indication.	6
B.	Rear view and rear panel elements.	6
VIII.	Preparing the receiver for operation	7
IX.	Configuring the receiver.....	9
A.	Connecting to a new receiver and setting LAN addresses.....	9
B.	Connecting to a receiver operating in LAN.	10
C.	Configuring remote server IP address for communication channel testing, receiver sound signals and clock (tab <i>Configure</i>).....	11
D.	List of receiver events. Disabling generation of event messages (tab <i>Events</i>).	12
E.	Controlling communication with GPRS and GSM objects (tab <i>General</i>).....	12
F.	Setting operation mode of COM ports (tab <i>COM settings</i>).	13
G.	SMS messages using SMPP protocol (tab <i>SMPP settings</i>).	14
H.	Adding receivers and setting their parameters (tab <i>Receivers</i>).....	14
I.	Directing messages to the message monitoring software (tab <i>Outputs</i>).	15
J.	Message filtering (tab <i>Filter</i>).	16
K.	User permissions (tab <i>Users</i>).	17
X.	Resetting default parameters.....	19
XI.	Receiver event messages	19
XII.	License activation.....	21

I. Safety requirements

IP/SMS receiver RL14 is an electrical device, therefore it may only be installed by qualified specialists following this manual.

IP/SMS receiver RL14 must be operated following this manual.

II. Warranty

According to the user manual of the receiver and general regulations for installing electrical equipment, the manufacturer provides a 24-month warranty to the installed and operated product. Warranty coverage starts at the moment of the product sale and purchase agreement, i.e. date of issue of invoice or fiscal receipt.

III. About receiver

IP/SMS receiver RL14 is purposed for Central Monitoring Stations (CMS). It is designed to receive messages transmitted through Trikdis transmission modules, which are sent in TCP/UDP protocols or SMS messages. After processing received messages, it sends the data to the monitoring software through LAN or RS232 port.

IV. Receiver functionality

Receiver has an integrated industrial computer with software IPcom v4 operating in OS Linux environment. Software IPcom v4 is designed to process message traffic received via 1) receiver network adapter card, 2) integrated SMS receiver, 3) receiver lead-in RS232.

Network card receives messages sent in TCP/UDP protocols. SMS receiver receives messages sent in Contact ID codes. RS232 port receives Contact ID codes in Sugard MRL-DG protocol.

Receiver's functionality is set in the license, which affect the parameters of IPcomControl v4 software. Receiver's parameters are set while configuring IPcomControl v4, which must be installed in MS Windows OS computer, located in the same network as the receiver.

There are multiple channels set for receiving messages and multiple ports for transferring messages to the monitoring software. The functionality and physical parameters of these channels and ports are configured while setting up the receiver.

Receiving messages:

Receives messages using TCP/IP or UDP/IP protocols sent by TRIKDIS GPRS communicators G10, G10C, G10T, G10D via GPRS and/or SMS channels. Note: A regular size SIM card from chosen GSM network provider must be inserted into integrated SMS receiver SIM card slot in order to receive messages via SMS channel.
Receives messages using TCP/IP or UDP/IP protocols sent by TRIKDIS Ethernet communicators E10, E10C, E10T via wired internet networks.
Receives messages using TCP/IP or UDP/IP protocols sent by TRIKDIS GPRS communicators G10F, FireCom via GPRS and/or SMS channels. Note: A regular size SIM card from chosen GSM network provider must be inserted into integrated SMS receiver SIM card slot in order to receive messages via SMS channel.
Receives messages using TCP/IP or UDP/IP protocols sent by TRIKDIS control panels CG3 and SP131 via GPRS and/or SMS channels. Note: A regular size SIM card from chosen GSM network provider must be inserted into integrated SMS receiver SIM card slot in order to receive messages via SMS channel.
Receives messages using UDP/IP protocols sent by TRIKDIS repeaters RR-GSM and R-IP12.
Receives messages sent by receivers from other manufacturers that are connected to lead-in RS232.

V. Technical parameters

Parameter	Description
Number of IP communicators	Unlimited
Number of reception channels	Initial license allows two channels
Communication protocols	TCP/UDP TRK-3, TRK-6, TRK-7
Physical port of network adapter card	RJ-45 (FastEthernet 10/100)
Modem of integrated SMS receiver	GSM 850/ 900/ 1800/ 1900 MHz
Integrated SMS receiver SIM card type	Standard, not supplied with the receiver
Purpose of RS232 ports	It can configured to work as INPUT or OUTPUT for data transferring
Number of RS232 ports	3
Data output protocols	Surgard MLR2-DG, Monas3
Physical type of RS232 ports	Male connector DB9
Setting parameters and monitoring the operation	Computer operating in the same network with MS Windows 32/64 bit Win7, Win8, Win8.1, Win10 and software IPcomControl v4
Number of workplaces	Initial license allows adding 2 workplaces
Primary power supply	110 – 240 V (50 / 60 Hz) AC network
Power / Current consumption	Up to 60W / 0.35A
Backup power supply	12 V, capacity of 18Ah or more. Charging current up to 900 mA.
Operating temperature	From 0 °C to +55 °C
Dimensions	19" 1U (450 x 50 x 320 mm)
Weight	2.1 kg

VI. Equipment

IP/SMS receiver RL14	1 pc.
2.5 m length GSM antenna with a magnetic pad	1 pc.
1.5 m length power supply cable	1 pc.
1.8 m length Null Modem-type COM cable (f/f)	1 pc.
5 m LAN cable	1 pc.
CD with software IPcomControl v4 and user manual	1 pc.

VII. Receiver elements

A. Front view and light indication.



Front view of the receiver

Light indication


Indicator	Description
Power	Green light when power supply is on.
Status	Green light when physical and protocol connection between the receiver and message monitoring software is online. Red light when physical and protocol connection between the receiver and message monitoring software is lost. Yellow light when physical and protocol connection between the receiver and message monitoring software is online via some described and active ports but has been lost via the rest. No light when receiver port is not active or not described.
Event	Blue light when a message is being transmitted to the message monitoring software.

B. Rear view and rear panel elements.



Rear view of the receiver

Rear panel elements

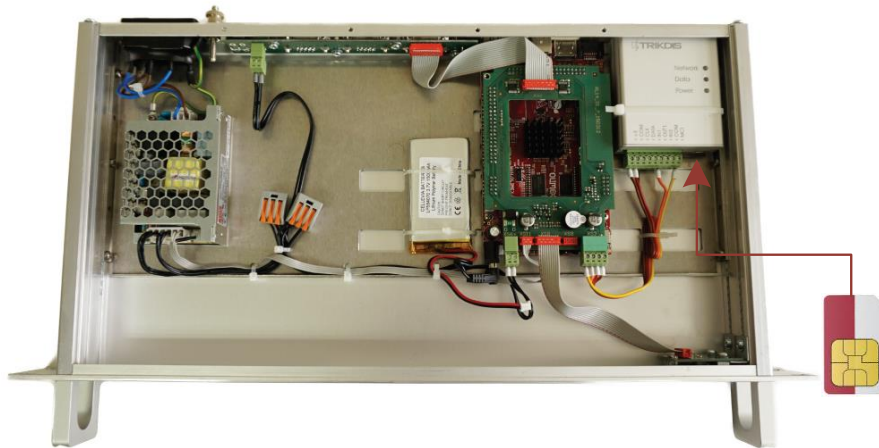
Element	Description
LAN	Connector RJ45 for network adapter card.
COM1	1st serial port RS232 that is set as data lead-in or output (male connector DB9).
COM2	2nd serial port RS232 that is set as data lead-in or output (male connector DB9).
COM3	3rd serial port RS232 that is set as data lead-in or output (male connector DB9).
Reset	Microswitch that resets default internet addresses of receiver network adapter card when pressed and held for more than 5 seconds.
Antenna	SMA-type female connector for GSM antenna of integrated SMS receiver.
HDMI	HDMI connector for monitor.
USB	USB connection.
	Connector for receiver grounding circuit.
- BAT +	Dismountable connector for backup power supply battery (at least 18 Ah 12 V). Battery status may be controlled if there are no power supply problems. Battery charging current - 900 mA.
100-240VAC	Power supply cable connector and switch O/I.

VIII. Preparing the receiver for operation

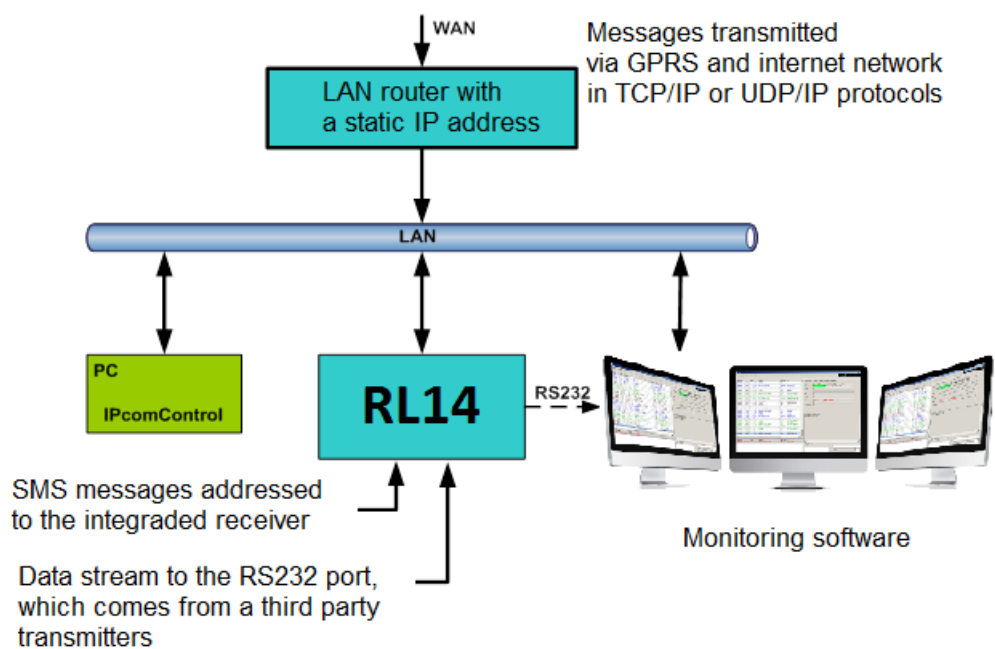
1. Power supply must be turned off when receiver is being prepared for operation, i.e. 1) receiver power supply cable must be disconnected from the network and 2) receiver connector BAT to which backup power supply circuit is connected must be unplugged.

Note: Receiver will fully shut down only 2 minutes after turning off the power supply!

2. Insert an already registered regular size SMS card of the chosen network provider into receiver's SMS card slot in order to receive SMS messages from Trikdis message transmission modules.
3. Position the receiver on a solid clean horizontal surface, unscrew fixing screws and remove the top cover. Insert the SIM card into a SMS receiver's SIM card slot. Put side and top covers back on (see picture below). Screw the top cover.



4. Mount the receiver in a 19" server rack.
5. Screw the GSM antenna.
6. Prepare a LAN according to a principal scheme below:



7. Install software *IPcomControl v4* (see *Configuring the receiver*) on the computer that will be used to configure receiver RL14.
8. Change the IP address of the computer that will be used to configure receiver RL14 to that required by the receiver manufacturer (see item A under section *Configuring the receiver*).
9. Connect receiver RL14 and the computer that will be used to configure the parameters of the receiver using LAN cable
10. Insert the power supply cable connector into the 110-220 V power socket of the receiver and plug the cable into the mains socket.
11. Turn on the power supply of the receiver, i.e. toggle the power supply switch O/I to I. Power supply is indicated by the blue light diode Power. A sound signal will indicate that receiver is prepared for configuration.
12. Configure parameters of receiver RL14 **in the following order**:
 - 1) Set the parameters of the receiver network adapter card so that receiver may operate in a designated LAN (see section *Connecting to a new receiver*);
 - 2) Add and describe ports through which message traffic is directed to the message monitoring software (see tab *Outputs* under section *Configuring the receiver*);
 - 3) Add and describe ports through which message traffic will be received (see tabs *COM settings* and *Receivers* under section *Configuring the receiver*);
 - 4) Add and describe programmable receivers which will direct processed message traffic through ports to message monitoring software (see tab *Receiver* under section *Configuring the receiver*);
 - 5) Add and describe users who will be permitted to log in and perform assigned tasks during operation of the receiver (see tab *Users* under section *Configuring the receiver*).
13. Disconnect the LAN cable from the receiver and the computer (if it does not belong to LAN) once desired receiver parameters are set.
14. Connect receiver RL14 and the computer with message monitoring software.

Use RS232 cable supplied with the equipment to connect the chosen receiver output COM and computer with message monitoring software if messages will be transmitted to the message monitoring software using port RS232;

Connect the receiver and the local area network with operating server-computer with message monitoring software via receiver network adapter card connector LAN if messages will be transmitted to the message monitoring software via LAN.

IX. Configuring the receiver

Operation parameters of receiver RL14 are set and edited using software *IPcomControl v4* on a computer with OS MS Windows operating in the same LAN. Software may be found in the supplied CD or on www.trikdis.lt. Install software *IPcomControl v4* on the computer.

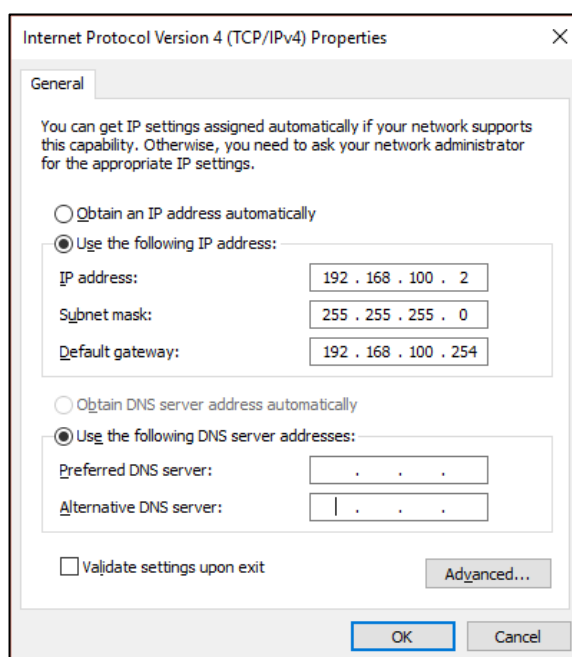
A. Connecting to a new receiver and setting LAN addresses.

Default addresses of network adapter card:

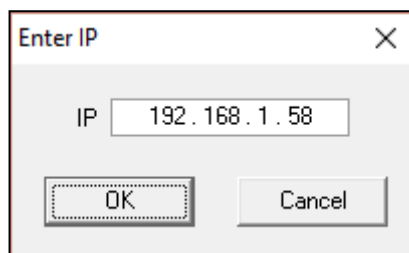
IP address	192.168.100.3
Port	55000
Subnet mask	255.255.255.0
Gateway	192.168.100.254

In order to restore default settings refer to chapter IX. Resetting default parameters.

1. Computer and receiver must operate in the same network in order to configure the receiver. Change the network adapter card addresses of the computer that will be used to configure the receiver to match those indicated in the tab.



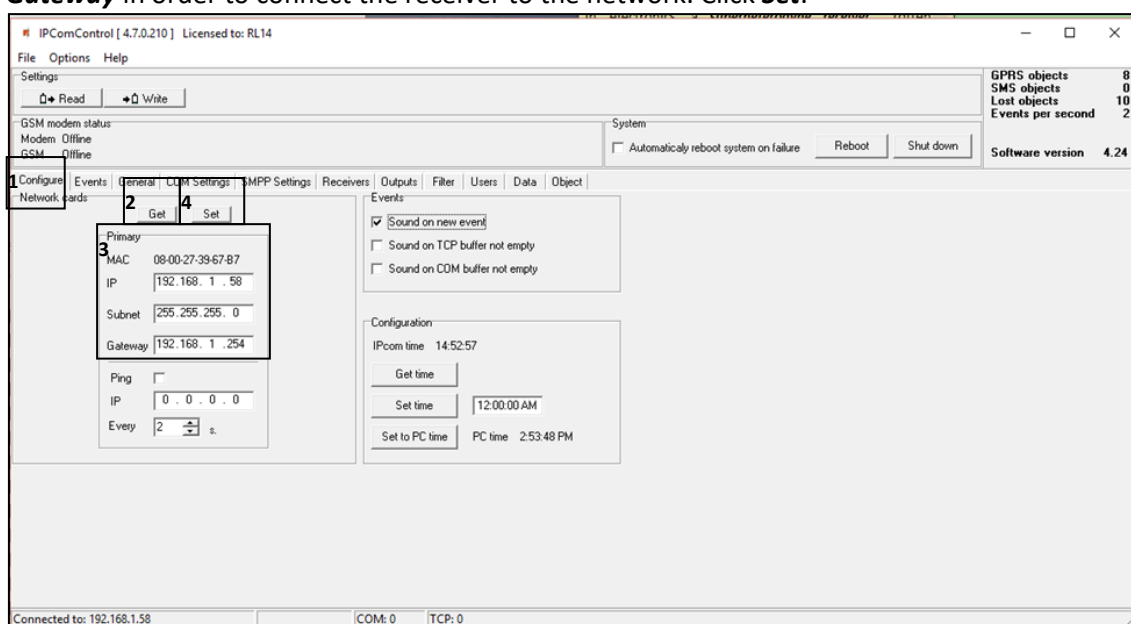
2. Use LAN cable to connect the receiver and the computer that will be used to configure the receiver.
3. Turn on the main power supply and wait a few seconds until a sound signal will indicate that receiver is on.
4. Run *IPcomControl v4*. Enter the default IP address of the receiver network adapter card and click OK.



5. Enter the User name (*administrator*) and password (*admin*) when prompted. Click **Login**.



6. Select IPcomControl v4 tab **Configure**. Click **Get**. Enter LAN values into boxes *Primary IP*, *Subnet* and *Gateway* in order to connect the receiver to the network. Click **Set**.

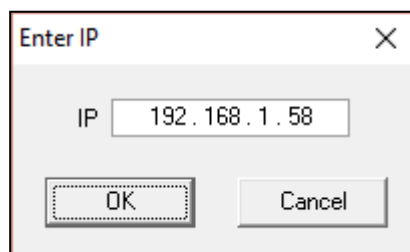


7. Receiver should automatically reboot and restart. Software IPcomControl v4 will close automatically. Receiver is prepared for operation in LAN.
8. Disconnect the LAN configuration cable from the receiver and plug in the cable of local area network whose addresses were just set in its place.
9. Restore network adapter card addresses of the computer that was used to configure the receiver. Computer may now operate in previously used networks.

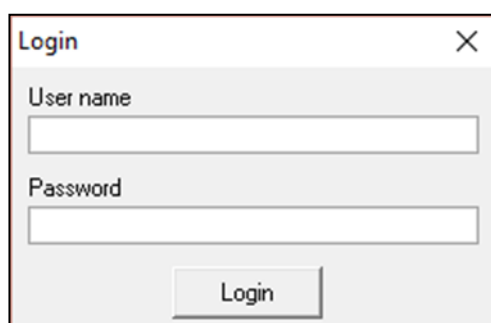
B. Connecting to a receiver operating in LAN.


Receiver operating in LAN is configured using software IPcomControl v4 on a 32/64 bit computer with OS MS Windows Win7/8/8.1/10. Several computers with software IPcomControl v4 may be connected to the receiver at once. Number of connections is limited by license that may be viewed by clicking **Help** in software IPcomControl v4.

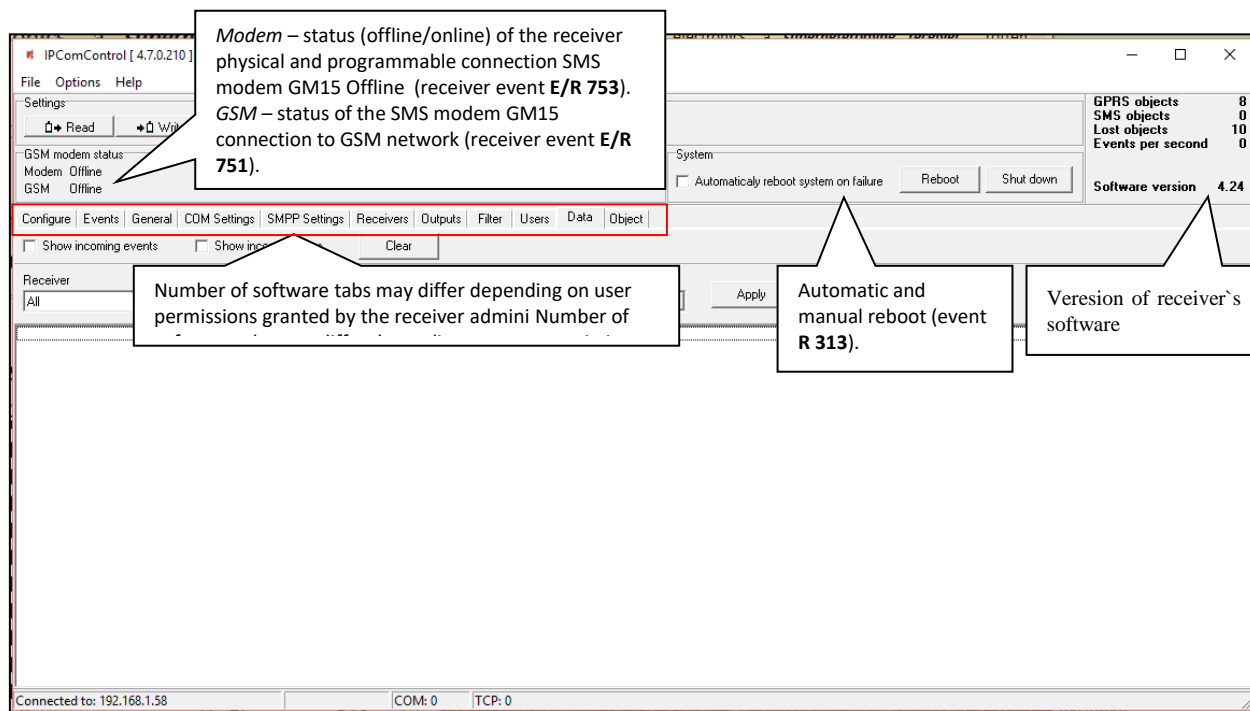
1. Run software IPcomControl v4. Enter the IP address of the LAN receiver network adapter card, e.g., 195.15.184.138, when prompted and click OK.



2. Enter the User name (*administrator*) and password (*admin*) when prompted. Click **Login**.



3. Click **Read**  in an open window of software IPcomControl v4.



- C. Configuring remote server IP address for communication channel testing, receiver sound signals and clock (tab Configure).

Receiver sound signals

1. Every received message will be followed by a sound signal.
2. Sound signal will indicate accumulation of messages in TCP/IP buffer.
3. Sound signal will indicate accumulation of messages in RS232 buffer.

Receiver time view and configuration

Get time – displays time.
 Set time – sets time value entered in the field
 Set to PC time – sets the receiver time according to PC time.

Option to test the quality of message reception from GPRS networks and wide area network (WAN) (receiver event E/R 732). Testing is activated when box Ping is ticked and IP address of external network server is entered. Server must be capable to respond to ping continuously and, e.g. every 2 seconds.

D. List of receiver events. Disabling generation of event messages (tab Events).

Enable/disable generation of an event message

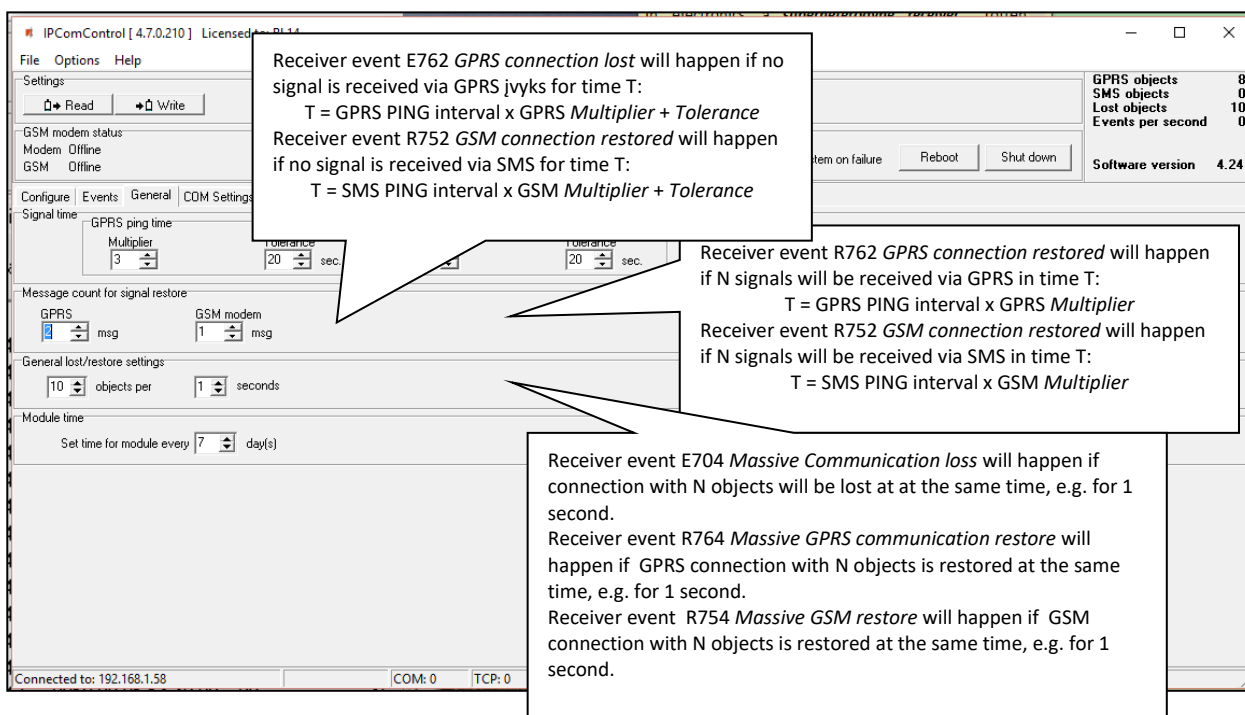
Enabled	Event name	Event code
<input checked="" type="checkbox"/>	Lost GPRS connection	E 762 98 000
<input checked="" type="checkbox"/>		R 762 98 000
<input checked="" type="checkbox"/>		E 752 98 000
<input checked="" type="checkbox"/>		R 752 98 000
<input checked="" type="checkbox"/>		E 704 98 000
<input checked="" type="checkbox"/>		R 764 98 000
<input checked="" type="checkbox"/>		R 754 98 000
<input checked="" type="checkbox"/>		E 732 98 001
<input checked="" type="checkbox"/>	WAN ping restored	R 732 98 001
<input checked="" type="checkbox"/>	GSM modem no response	E 753 98 000
<input checked="" type="checkbox"/>	GSM modem responded	R 753 98 000
<input checked="" type="checkbox"/>	GSM connection is offline	E 751 98 000
<input checked="" type="checkbox"/>	GSM connection is online	R 751 98 000
<input checked="" type="checkbox"/>	WAN cable disconnected	E 733 98 001
<input checked="" type="checkbox"/>	WAN cable connected	R 733 98 001
<input checked="" type="checkbox"/>	Receiver no heart beat	E 713 98 001
<input checked="" type="checkbox"/>	Receiver heart beat restored	R 713 98 001
<input checked="" type="checkbox"/>	System rebooted	R 313 98 000
<input checked="" type="checkbox"/>	System started	R 305 98 000
<input checked="" type="checkbox"/>	GSM device mode	R 755 99 000
<input checked="" type="checkbox"/>	Connection trouble	E 350 99 000
<input checked="" type="checkbox"/>	Connection restore	R 350 99 000
<input checked="" type="checkbox"/>	Output connection trouble	E 350 99 000
<input checked="" type="checkbox"/>	Output connection restore	R 350 99 000
<input checked="" type="checkbox"/>	System peripheral trouble	E 330 99 000

Connected to: 192.168.1.58 COM: 0 TCP: 0

Upon occurrence of an event listed in the window above, a message will be formed and sent to the monitoring software. Reporting of unwanted events can be turned off by ticking off the check box.

Configuration of a receiver allows to change: Event code, Partition's number and zone. For some of the messages the output channel identification is set automatically. For detailed list and conditions for generating an event messages refer to chapter X. Receiver event messages.

E. Controlling communication with GPRS and GSM objects (tab General).



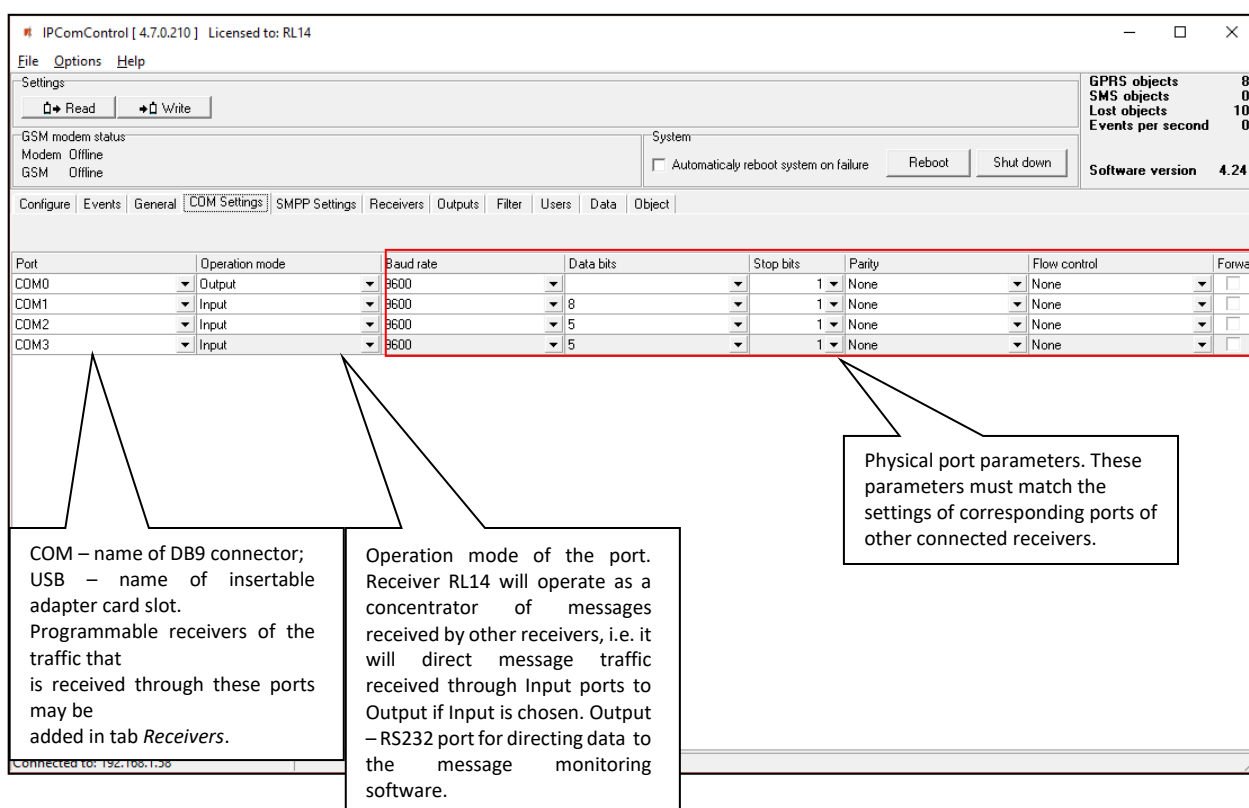
F. Setting operation mode of COM ports (tab COM settings).

Port name:

COM0 – Integrated SMS receiver data port. Operation mode must be set to “Trikdís”.

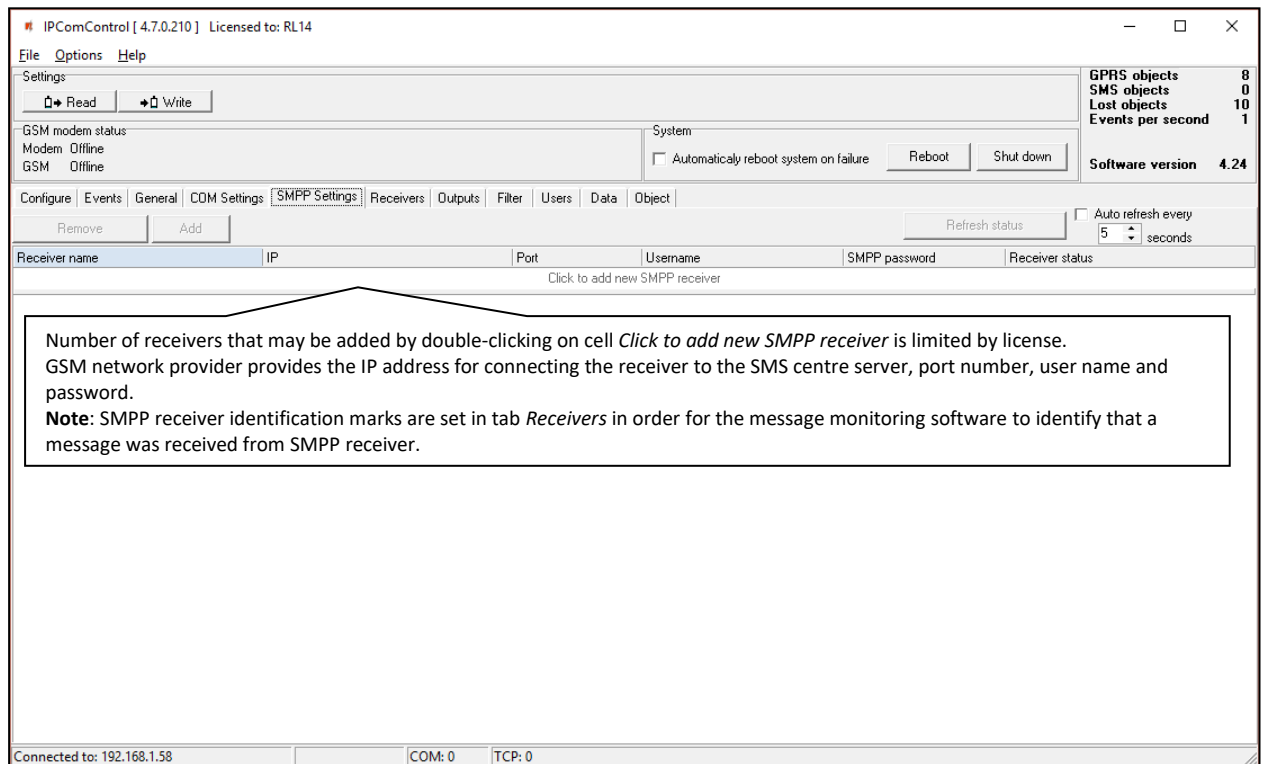
COM1...COM3 – Receiver RS232 ports.

Card_1...Card_4 – receiver card sockets.

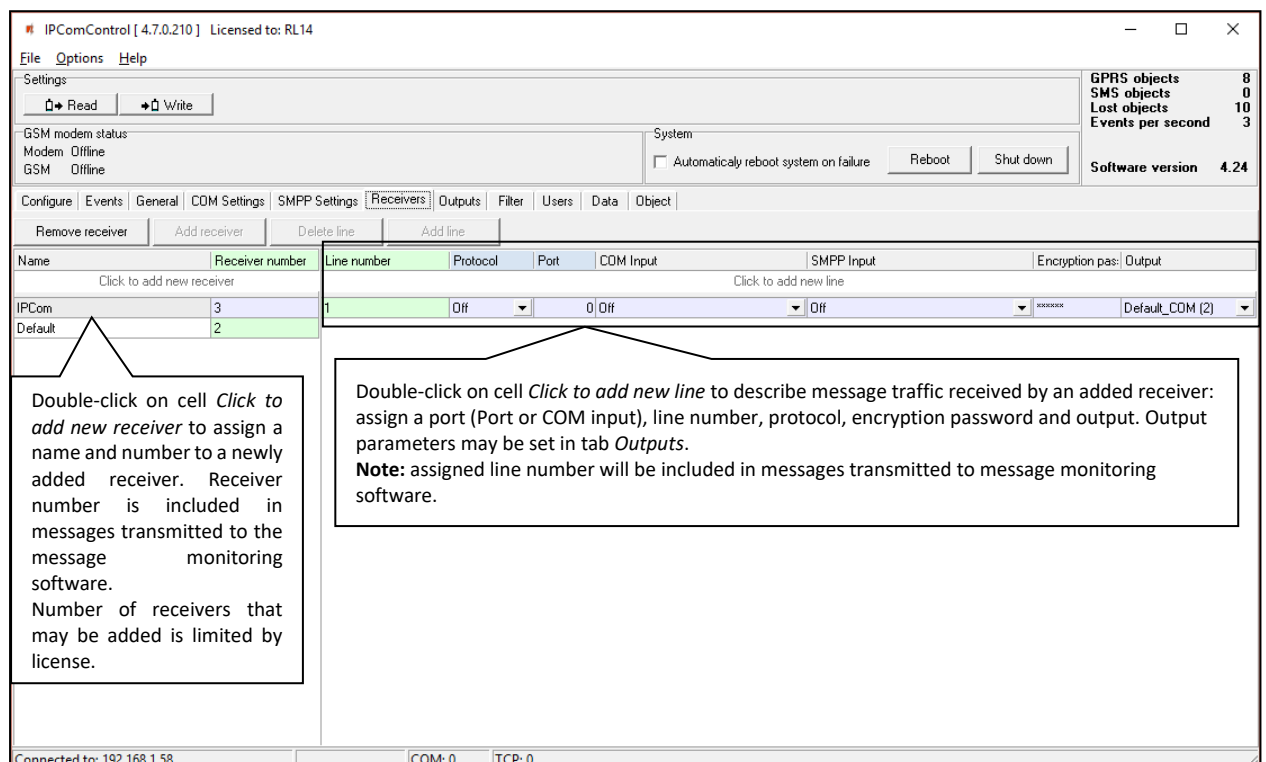


G. SMS messages using SMPP protocol (tab *SMPP settings*).

SMPP – protocol for SMS message transmission using TCP/IP communication, i.e. it allows receiving SMS messages sent by Trikdis message transmission modules via LAN instead of integrated SMS modem.



H. Adding receivers and setting their parameters (tab *Receivers*).

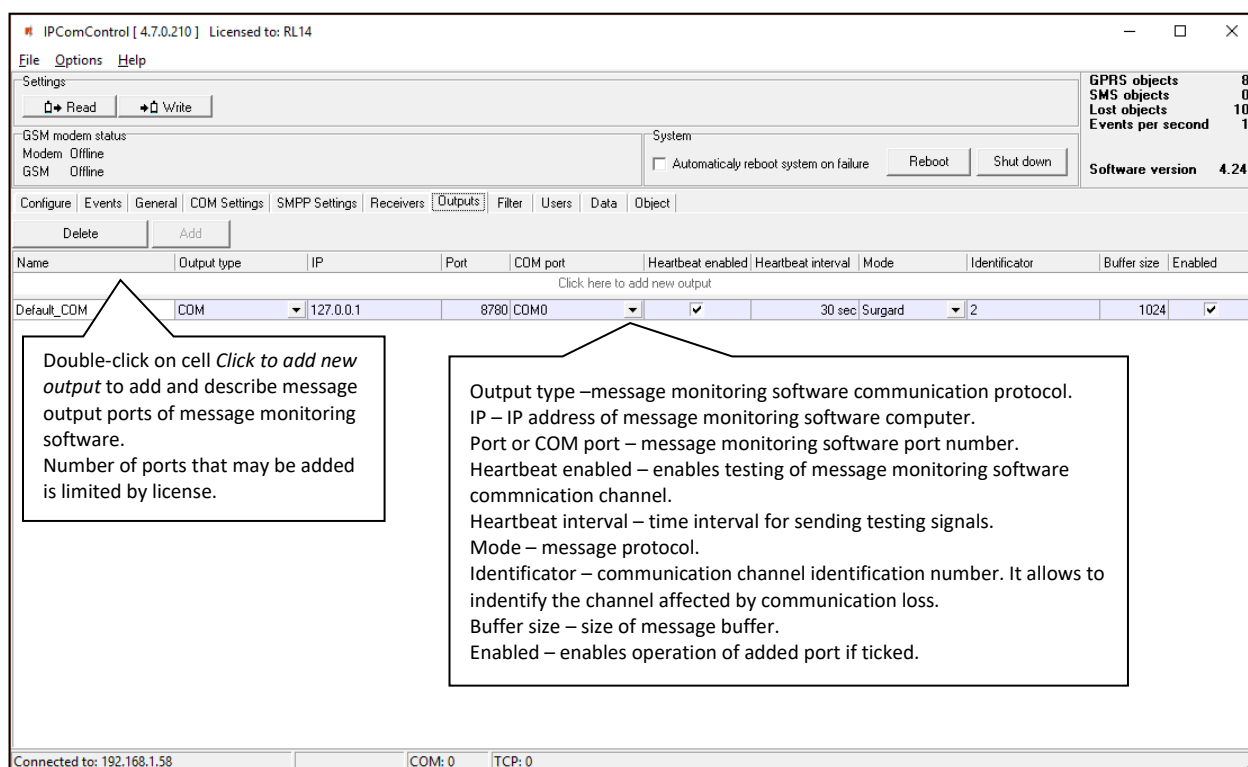


All the events listed in the “Events” tab are received from chosen IPcom channel and redirected to chosen output port. In order to, receive messages sent from secured object via TCP/UDP protocols a separate receiving channel must be created. Data stream received from this channel are redirected to the chosen output port.

Data stream redirection parameters:

- Line number – specify line number
- Protocol – specify data stream transfer protocol
- Port – specify input port
- COM input - specify physical input port
- SMPP input – specify SMPP server parameters
- Encryption password – specify a six digit encryption key for incoming data stream
- Output – specify output port for data stream, which parameters are set in “Output” tab

I. Directing messages to the message monitoring software (tab *Outputs*).



Output parameters for sending messages to the monitoring software:

- Name – specify port name
- Output type – specify connection type with the monitoring software: TCP or COM
- IP – specify monitoring stations IP address
- Port / COM port – specify output port number
- Heartbeat enabled – enable polling with the monitoring software
- Heartbeat interval – specify the period for polling
- Mode – specify the protocol of messages
- Identifier – specify the identification number for the channel. It will allow to identify the channel upon losing the connection with it.
- Buffer size – specify the message buffer size
- Enable – enables the created channel to function.

J. Message filtering (tab *Filter*).

IP address to which all received messages are additionally directed may be set in tab *Filter*.

[illegible]

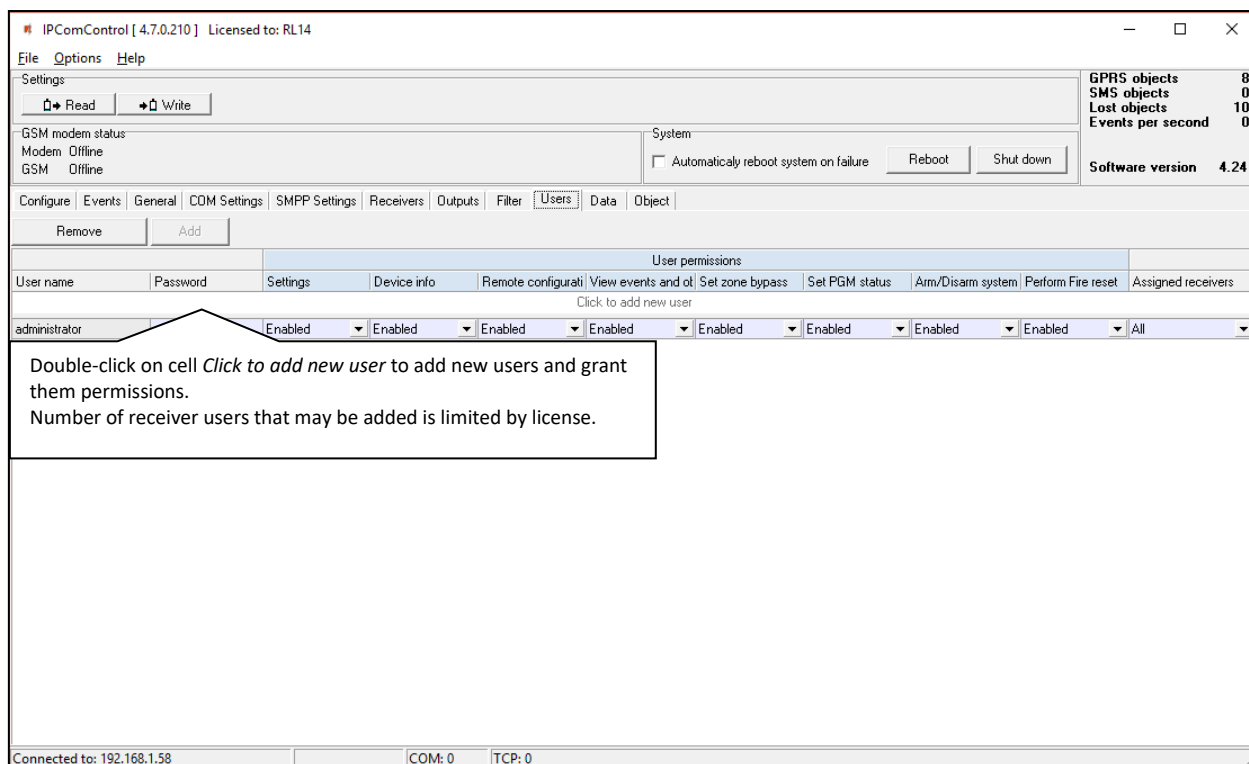
IP address and port number to which all received messages will be sent are entered in field *Raw data*. Messages will be sent to the specified IP address without processing when box [Started] is ticked. Messages will be changed according to protocol Contact ID if box [Standard messages] is ticked.

Message filtering parameters are set in field *Filter settings*. Click *Add filter* to open tab *Filter settings*. Specify the rules for message transmission to the message monitoring software:

- Enter the network number in box *Network*. Only those messages with matching receiver number and network number will be filtered;
- Enter tolerance time for the same signal (or repeated tolerance signals) in box *Time*;
- Enter the receiver number displayed in the processed message in box *Receiver no*;
- Enter the receiver line number displayed in the processed message in box *Line no*;
- Check box *Convert* in order to change the structure of filtered messages;
- Check box *Tunneling* to keep the structure of filtered messages;
- Enter special event codes used to ignore messages re-transmitted in RAS-2M system in box *Events one per line*;
- Click OK to confirm entered values;
- Several different filters may be set up and used.

Messages are transmitted to message monitoring software using receiver and line numbers indicated in tab *General* if box *Tunneling* is checked in field *Not filtered*. Messages are transmitted with indicated receiver and line number if box *Tunneling* is not checked.

K. User permissions (tab Users).



User permissions parameters:

- User name – specify the user name
- Password – specify the user password
- Settings – specify permission to configure receiver software IPcom.
- Device info – specify permission to view receiver information about objects.
- Remote configuration – specify permission to remotely configure message transmission module and update its firmware.
- View events and objects – specify permission to open software IPcomControl v4 tabs Data and Objects.
- Set zone bypass – specify permission to send control commands to Trikdiss control panel installed in a secured object in order to activate or deactivate Zone bypass mode in a specific zone.
- Set PGM status – specify permission to switch message transmission module PGM output status remotely.
- Arm/Disarm system – specify permission to send control commands to Trikdiss control panel installed in a secured object in order to arm or disarm the alarm system.
- Perform Fire reset – specify permission to send control commands to Trikdiss control panel installed in a secured object in order to automatically reset the operation of connected smoke sensor.
- Assigned receivers – specify the receivers for which the user permissions apply

User permission options:

- Enable – Permission enabled.
- Disable – Permission disabled.
- Read only – Permission to only read provided information.

L. Receiving Messages (tab *Data*)

Received messages can be seen in the tab **Data**. Click **Clear** to delete all entries.

IPComControl [4.7.0.210] Licensed to: RL14

File Options Help

Settings

Read Write

GSM modem status
Modem Offline
GSM Offline

System
☐ Automatically reboot system on failure Reboot Shut down

Configure Events General COM Settings SMPP Settings Receivers Outputs Filter Users Data Object

☐ Show incoming events ☐ Show incoming pings Clear

Receiver Line nr. Object ID Input Output Apply

2016.07.28 15:28:36: 5021 18E10CE760FF001
2016.07.28 15:28:42: 5021 182222E760FF001
2016.07.28 15:28:46: 5021 18E10CE760FF001
2016.07.28 15:28:51: 5021 182016E760FF003
2016.07.28 15:28:53: 5021 182016E760FF003
2016.07.28 15:28:54: 5021 182016E760FF003
2016.07.28 15:28:55: 5021 182222E760FF001
2016.07.28 15:28:57: 5021 18E10CE760FF001
2016.07.28 15:29:06: 5021 18E10CE760FF001
2016.07.28 15:29:06: 5021 182222E760FF001
2016.07.28 15:29:07: 5021 182222E760FF000
2016.07.28 15:29:16: 5021 18E10CE760FF001
2016.07.28 15:29:18: 5021 182222E760FF001
2016.07.28 15:29:21: 5021 182016E760FF003
2016.07.28 15:29:23: 5021 182016E760FF003
2016.07.28 15:29:26: 5021 18E10CE760FF001
2016.07.28 15:29:36: 5021 18E10CE760FF001
2016.07.28 15:29:46: 5021 18E10CE760FF001
2016.07.28 15:29:51: 5021 182016E760FF003

Connected to: 192.168.1.58 COM: 0 TCP: 0

M. Registered object list (tab *Object*)

IPComControl [4.7.0.210] Licensed to: RL14

File Options Help

Settings

Read Write

GSM modem status
Modem Offline
GSM Offline

System
☐ Automatically reboot system on failure Reboot Shut down

Configure Events General COM Settings SMPP Settings Receivers Outputs Filter Users Data Object

Refresh list Receiver All Search 0 Remove object All ☒ Refresh list every: 10 seconds Export to CSV file

Receiver name	ID	Status	Level	IP	GSM ping int...	Phone	GSM last ping	GSM ping int...	Type	Device version	IMEI/MAC
Default	0001	Connection lost	F	192.168.1.47	2016.08.01 14:42:39	30	N/A	N/A	No Pings	G10	450017051271853
Default	0001	Waiting for GPRS messa...	F	192.168.1.47	2016.08.01 17:00:05	30	N/A	N/A	No Pings	G10	450008475704603
Default	0002	Waiting for GPRS messa...	F	192.168.1.47	2016.08.01 14:42:39	30	N/A	N/A	No Pings	G10	450011336223456
Default	0002	Connection lost	F	192.168.1.47	2016.08.01 14:42:39	30	N/A	N/A	No Pings	G10	450020806562559
Default	0003	Waiting for GPRS messa...	F	192.168.1.47	2016.08.01 17:00:07	30	N/A	N/A	No Pings	G10	450010215850546
Default	0003	Connection lost	F	192.168.1.47	2016.08.01 14:42:39	30	N/A	N/A	No Pings	G10	450000815443453
Default	0004	Waiting for GPRS messa...	F	192.168.1.47	2016.08.01 17:00:05	30	N/A	N/A	No Pings	G10	450021396823857
Default	0004	Connection lost	F	192.168.1.47	2016.08.01 14:42:39	30	N/A	N/A	No Pings	G10	450016862894250
Default	0005	Waiting for GPRS messa...	F	192.168.1.47	2016.08.01 17:00:04	30	N/A	N/A	No Pings	G10	450011606916278
Default	0005	Connection lost	F	192.168.1.47	2016.08.01 14:42:39	30	N/A	N/A	No Pings	G10	450020729070035
Default	0006	Waiting for GPRS messa...	F	192.168.1.47	2016.08.01 17:00:07	30	N/A	N/A	No Pings	G10	450014996932962
Default	0006	Connection lost	F	192.168.1.47	2016.08.01 14:42:39	30	N/A	N/A	No Pings	G10	450015163114838
Default	0007	Waiting for GPRS messa...	F	192.168.1.47	2016.08.01 17:00:05	30	N/A	N/A	No Pings	G10	450000475616672
Default	0007	Connection lost	F	192.168.1.47	2016.08.01 14:42:39	30	N/A	N/A	No Pings	G10	450016485546791
Default	0008	Connection lost	F	192.168.1.47	2016.08.01 14:42:39	30	N/A	N/A	No Pings	G10	450011335405899
Default	0009	Connection lost	F	192.168.1.47	2016.08.01 14:42:39	30	N/A	N/A	No Pings	G10	450007588415537
Default	000A	Connection lost	F	192.168.1.47	2016.08.01 14:42:39	30	N/A	N/A	No Pings	G10	450015193097608
Default	3000	Waiting for GPRS messa...	0	192.168.1.47	2016.08.01 14:42:18	No Pings	N/A	N/A	No Pings	G10_v1.64	458698678678672

COM: 0 TCP: 0

- Registered object list is displayed in tab **Object**. It contains:
- ID – object's number;
- Status – connection status;
- Level - GSM connection strength;

- IP – transmission module address;
- GPRS last ping – date and time of the last IP message;
- GPRS ping interval – connection control period of IP channel messages;
- Phone – subscription number of transmission module (communicator) SIM card;
- GSM last ping – date and time of the last message received via GSM;
- GSM ping interval – connection control period of GSM connection messages;
- Type – transmission module type;
- Device version – transmission module program version;
- IMEI/MAC – transmission module IMEI or MAC number.

Use function **Search** to find the data row for required object burglary or fire alarm communicator. Function **Remove object** – to delete a selected line from the list. **Refresh list every: seconds** – to set list update period. Click **Export to CSV file** – to create a list of registered objects (communicators) in a CSV file that can be opened using, for example, MS Office program Excel.

X. Resetting default parameters

In order to reset default receiver network adapter card IP addresses, press and hold RESET switch until a sound signal is heard.

XI. Receiver event messages

Receiver generates and sends a message to the monitoring software in case of any of the receiver events. Messages are sent with set receiver, line numbers and object identification numbers:

- 1) Received from the device from object, if event is connected with the object.
- 2) 0000, if event is connected with general function events.

List of receiver RL14 event codes

Event CID code	Event name	Receiver message values		Conditions for event message generation
		Object ID number	Zone number	
E301	AC Power loss	0000 Receiver ID	000	Power supply loss for 10 seconds or more
R301	AC Power restore	0000 Receiver ID	000	If power loss (CID E301) was recorded and power restored for 10 seconds or more.
R305	System started	0000 Receiver ID	000	IPcom software restarts
E308	System shutdown	0000 Receiver ID	000	Power loss from main and back-up battery and passed 1 minute waiting period.
E311	Battery missing	0000 Receiver ID	000	Integrated battery has been disconnected for over 1 minute.
R311	Battery connected	0000 Receiver ID	000	Integrated battery was disconnected (CID E311) and is reconnected for over 1 minute.
R313	System rebooted	0000 Receiver ID	<input checked="" type="checkbox"/>	A command to reboot the system was generated using IPcomControl. Equipment failure to receive data via COM port recorded. Zone number indicates port ID.
E330	System peripheral trouble	Transmission module ID	Number of repeating modules	a) New module appears on a system having an object ID of already existent module. b) A new module's unique number is not in the system.
E350	Connection trouble	Transmission module ID	000	a) Transmission module is working in a GPRS mode, no messages were received from it within a set time period. b) Transmission module is working in GSM mode, no messages were received from it within a set time period. Note: Mass connection lost was not recorded (CID E704)
R350	Connection restore	Transmission module ID	000	a) Transmission module is working in a GPRS, connection trouble (CID E350) was recorded, but Massive GPRS

				<p>connection restore (CID R764) was not recorded and a set amount of messages were received from the module, stating that connection was restored.</p> <p>b) Transmission module is working in a GSM, connection trouble (CID E350) was recorded, but Massive GSM connection restore (CID R754) was not recorded and a set amount of messages were received from the module, stating that connection was restored.</p>
E350	Output connection trouble	0000 Receiver ID	<input checked="" type="checkbox"/>	Data from a receiver to the monitoring software is transmitted via TCP protocol and connection with the software is lost. Zone number indicates port ID.
R350	Output connection restore	0000 Receiver ID	<input checked="" type="checkbox"/>	Data from a receiver to the monitoring software is transmitted via TCP protocol and Output connection trouble was recorded (CID E350) and receiver connected back to the software. Zone number indicates port ID.
E704	Massive connection lost	0000 Receiver ID	<input checked="" type="checkbox"/>	There was a set number of connection losses with GPRS or GSM transmission modules. Zone number indicates port ID.
E712	Receiver i/o error	0000 Receiver ID	<input checked="" type="checkbox"/>	An error occurred while reading data from the port. Zone number indicates port ID.
R712	Receiver i/o restored	0000 Receiver ID	<input checked="" type="checkbox"/>	A Receiver i/o error (CID E712) was recorded and data was successfully read from the port. Zone number indicates port ID.
E713	Receiver no heart beat	0000 Receiver ID	<input checked="" type="checkbox"/>	No messages received from COM receiver for a minute. Zone number indicates port ID.
R713	Receiver heart beat restored	0000 Receiver ID	<input checked="" type="checkbox"/>	No signal from COM receiver recorded (E713). At least one message received from COM receiver. Zone number indicates port ID.
E714	Receiver card unplugged	0000 Receiver ID	<input checked="" type="checkbox"/>	Receiver card was unplugged. Zone number indicates port ID.
R714	Receiver card plugged in	0000 Receiver ID	<input checked="" type="checkbox"/>	Receiver card was plugged in. Zone number indicates port ID.
E732	WAN ping timeout	0000 Receiver ID	<input checked="" type="checkbox"/>	No response from PING destination (e.g. remote server) for three times in a row. Zone number indicates port ID.
R732	WAN ping restored	0000 Receiver ID	<input checked="" type="checkbox"/>	Loss of communication with network adapter card recorded (E732). Network adapter card received a response from PING destination (e.g. remote server). Zone number indicates port ID.
E733	WAN cable disconnected	0000 Receiver ID	000	Network cable removed from Ethernet connector.
R733	WAN cable connected	0000 Receiver ID	000	Network cable plugged back into Ethernet connector.
E751	GSM connection is offline	0000 Receiver ID	000	GSM modem alarmed about lost connection to GSM network by a service message. At least one minute passed after system activation.
R751	GSM connection is online	0000 Receiver ID	000	Connection loss between GSM modem and GSM network recorded (E751); GSM modem alarmed about restored connection to GSM network by a service message;
E752	Lost GSM connection			N/A
R752	Restored GSM connection			N/A
E753	GSM modem no response	0000 Receiver ID	000	No response received from GSM modem for 10 seconds;
R753	GSM modem responded	0000 Receiver ID	000	No response form GSM modem (E753); At least one response received from GSM modem;
R754	Massive GSM connection restore	0000 Receiver ID	000	In a set time period a set amount of GSM connection restores occur.

R755	GSM receiver mode	Transmission module ID	<input checked="" type="checkbox"/>	<p>a) Transmission module is working in GPRS mode, but any SMS message is received</p> <p>b) Transmission module is working in GSM mode and FIRST message is received</p> <p>c) Connection trouble (E350) was recorded and a set number of GSM messages were received, stating that GSM connection is restored.</p> <p>Zone number indicates port ID.</p>
E762	Lost GPRS connection	Transmission module ID	<input checked="" type="checkbox"/>	<p>a) Transmission module is working in GPRS mode, the type of the module is known and within a set time period no messages were received from the module Note: Mass connection lost was not recorded (CID E704)</p> <p>b) SMS transmission is enabled, and an SMS message is received.</p> <p>Zone number indicates port ID.</p>
R762	Restored GPRS connection	Transmission module ID	<input checked="" type="checkbox"/>	<p>Transmission module is working in GPRS mode and a set number of messages were received, stating that connection is restored.</p> <p>Zone number indicates port ID.</p>
R764	Massive GPRS connection restore	0000 Receiver ID	000	<p>In a set time period a set amount of GPRS connection restores occur.</p>

XII. License activation

Parameters of the initial license can be changed (upgraded) by installing a new license. Go to *Options* → *Activate product* browse and select license file, which is in .lic format.

1. Please enter your company name and select your device type (disabled if type has been detected automatically). Press Save to save your data to file. Send the generated file to Trikdis, UAB and wait for license code. Once received the code, enter it into the field at the bottom.

Company name: Device type:

Save

2. Enter your license code below and press Apply to activate it. Alternatively you can click Browse to select the license file and press Apply.

8A58464B67D1CC5A39A63FEF59E71A359580505038FA556886ADCE0A3321C80077392963D7D6
CADE00BE0CC5C420322AF8A872E9080D58C244AE52FE71D5FFAA94119A690D081C897FA4205
DD47A8B9F1E9D7B65CC70DF5AE81DB9A0CF861B05A9D1B8B5F8D566102A3DA217DF2C8C745

Browse

Apply Close

To install new license press the **Apply** button.