

## Application of Honeywell wireless sensors with the “FLEXi” SP3 control panel

September, 2022



### **Attention!**

Read this user manual carefully.

A representative from the company installing the alarm system will explain which functions of the **FLEXi SP3** security module must be activated to ensure proper protection of the premises.

<b>Copyright</b>	© 2022 UAB „Trikdis“. All rights reserved.
<b>Trademarks and patents</b>	Other trade names used in this document may be trademarks or registered trademarks belonging to their respective manufacturers or retailers.
<b>Manufacturer</b>	UAB „Trikdis“, Draugystes g. 17, LT-51229 Kaunas, Lithuania
<b>Version</b>	This document is applicable to <b>FLEXi SP3</b> security modules with firmware version v1.00 and up.
<b>Certification</b>	CE marking
<b>European Union directives</b>	2004/108/EC (EMC directive) 1999/5/EC (conformity directive)
<b>Contact information for inquiries</b>	Contact information can be found on the website <a href="http://www.trikdis.com">www.trikdis.com</a>



## Contents

1	Control panel firmware replacement .....	4
2	Linking a wireless sensors .....	6
3	Linking a wireless remote controller (keyfob) .....	8
4	Linking a wireless siren .....	10
5	Linking a wireless keypad 5828.....	11

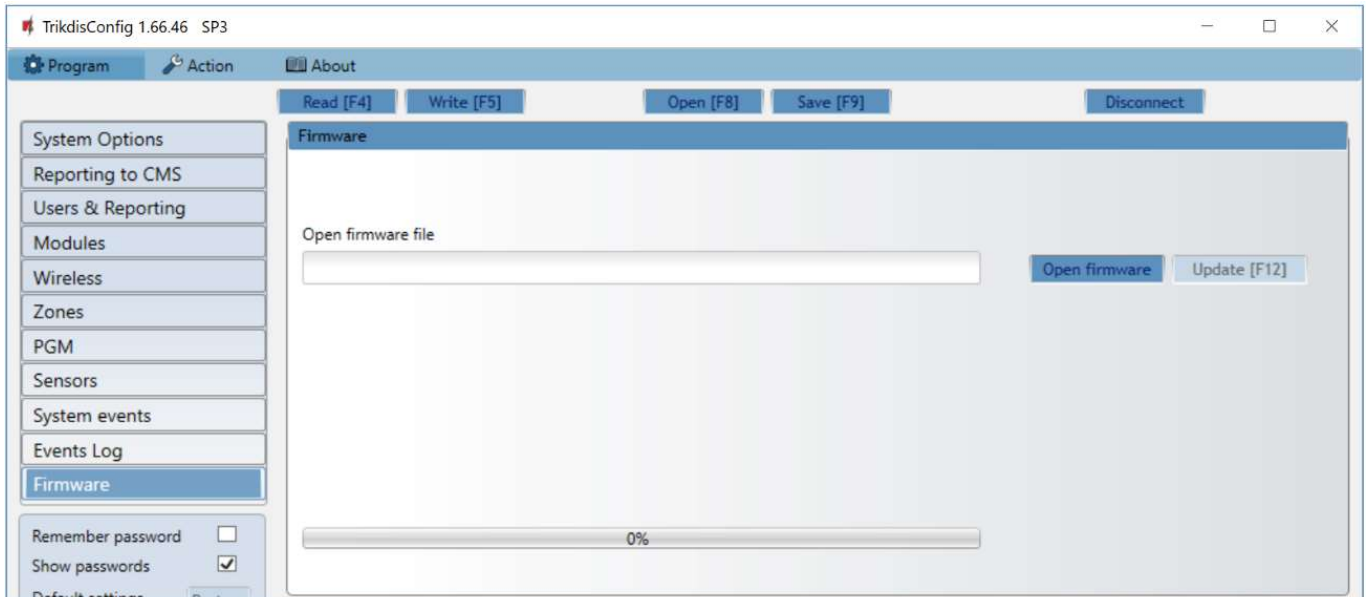


## 1 Control panel firmware replacement

The **“FLEXi” SP3** control panel firmware must be changed to **SP3\_xxx2\_0114.fw**, which will ensure the operation of Honeywell wireless sensors. The **RF-HW** wireless transceiver must be connected to the control panel.

Follow the steps below to replace the firmware:

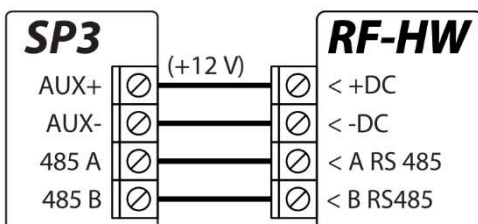
1. Switch on the power supply to the **“FLEXi” SP3** control panel.
2. Launch **TrikdisConfig**.
3. Connect the **“FLEXi” SP3** to a computer using a USB Mini-B cable.
4. Open the **TrikdisConfig** window **“Firmware”**.



5. Click the **“Open Firmware”** button and select the **SP3\_xxx2\_0114.fw** firmware file.
6. Click the **Update [F12]** button.
7. Wait for the updates to finish.
8. Disconnect the USB Mini-B cable.
9. Wait 1 minute.
10. Connect a USB Mini-B cable to the **“FLEXi” SP3**.
11. The **TrikdisConfig** status bar must contain the number 2 in the control panel name.



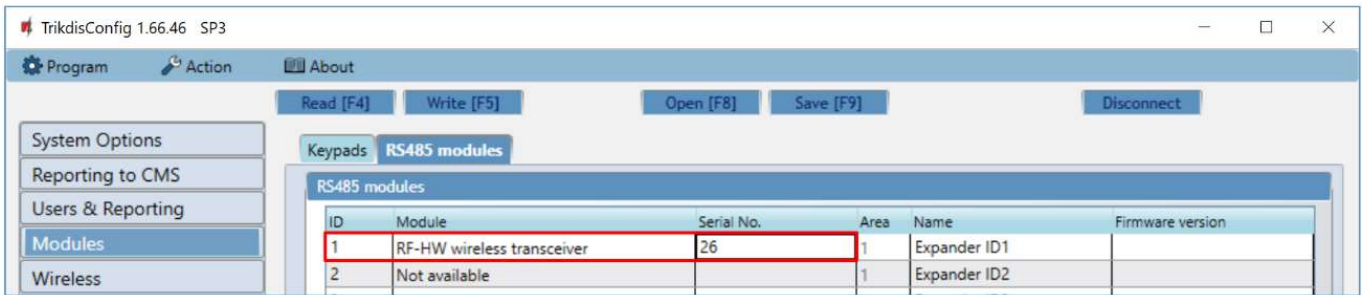
12. Switch off the power supply to the **“FLEXi” SP3** control panel.
13. Disconnect the USB Mini-B cable.
14. Connect the **RF-HW** transceiver and the **“FLEXi” SP3** according to the diagram.



15. Switch on the power supply to the **“FLEXi” SP3** control panel.
16. Wait 1 minute.
17. Connect the USB Mini-B cable to **“FLEXi” SP3**.
18. Launch the program **TrikdisConfig**, click the button **Read [F4]**.
19. In the **“Modules”** window, pick **“RF-HW wireless transceiver”**.



20. In the “**Serial No.**” field, enter the device’s serial number.



21. Click **Write [F5]**.

22. Disconnect the USB Mini-B cable.

23. Wait 1 minute for the “**FLEXi**” **SP3** and **RF-HW** to link together.

24. Connect a USB Mini-B cable to the “**FLEXi**” **SP3**.

25. Click **Read [F4]**.

26. The firmware version of the **RF-HW** will appear in the “**Modules**” window.



27. The **RF-HW** module is now linked to the “**FLEXi**” **SP3**.

28. Disconnect the USB Mini-B cable.

29. Click “**Disconnect**”.



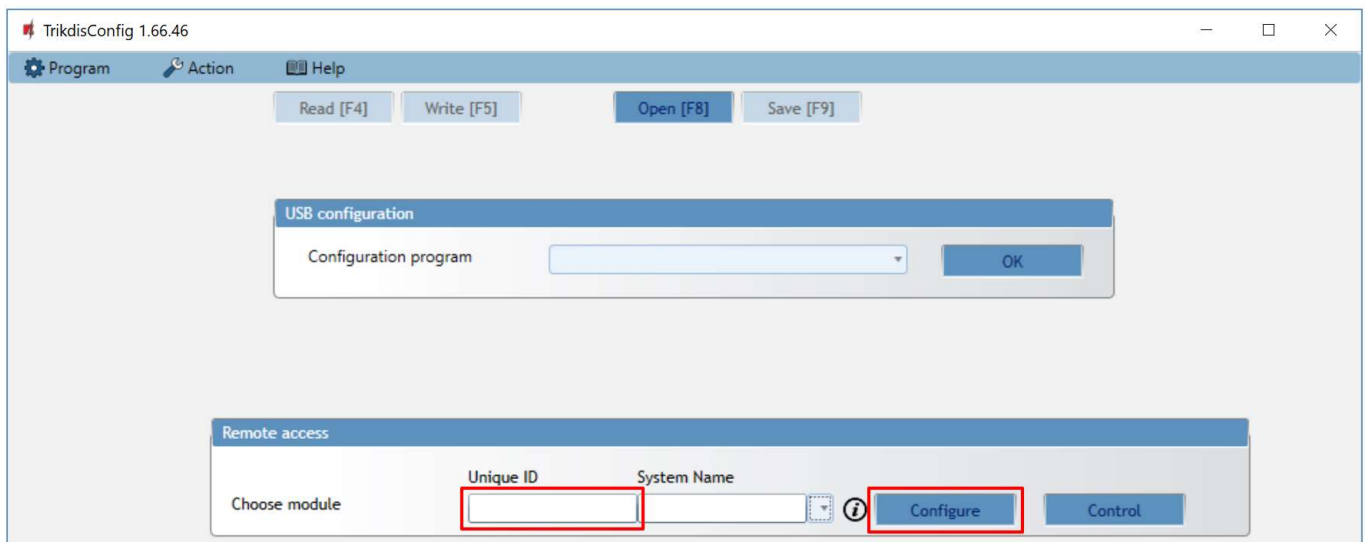
30. Wait 1 minute.

31. Using **TrikdisConfig**, remotely connect to the “**FLEXi**” **SP3** control panel.

**IMPORTANT:** Remote configuration will only work when “**FLEXi**” **SP3**:

1. An activated SIM card must be inserted and the PIN code must be entered or disabled.
2. Mobile internet is activated on the SIM card.
3. Protegus cloud service must be enabled.
4. The power must be switched on (“**PWR**” LED must be green blinking).
5. Must be connected to network (“**NET**” LED must be green solid and yellow blinking).

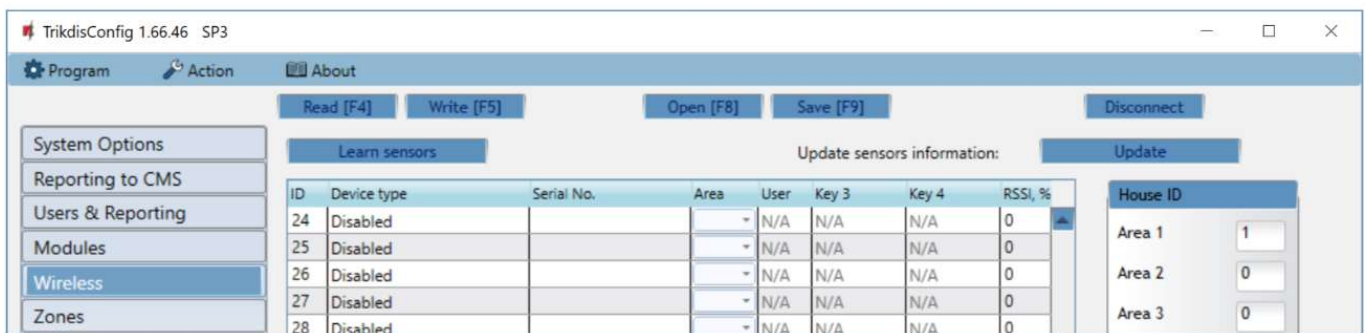
32. In the “**Remote access**” section enter the control panel “**IMEI/Unique ID**” number. This number can be found on the device and the packaging sticker.



33. Click **“Configure”**.

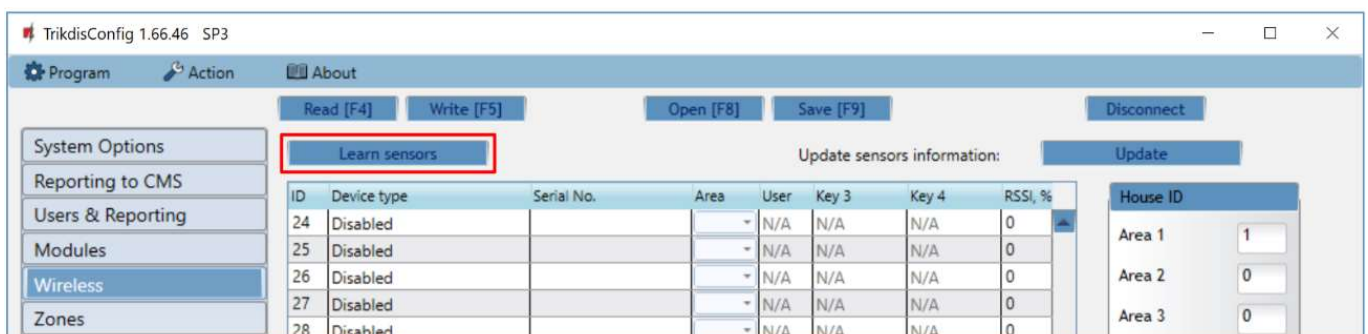
34. In the newly opened window click **Read [F4]**. If required, enter the administrator or installer code.

35. Go to the **“Wireless”** window.



## 2 Linking a wireless sensors

Click the **“Learn sensors”** button.



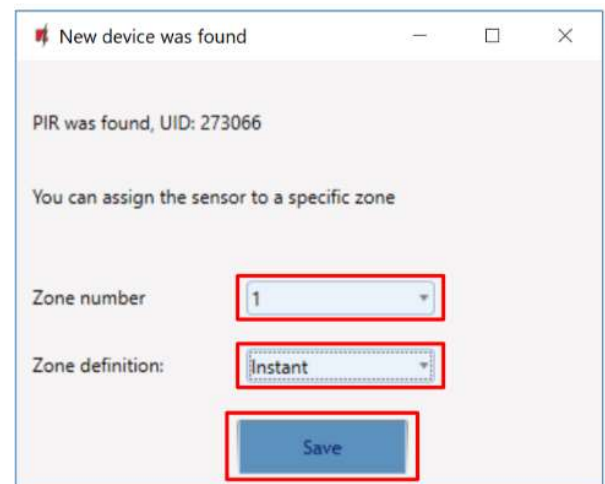
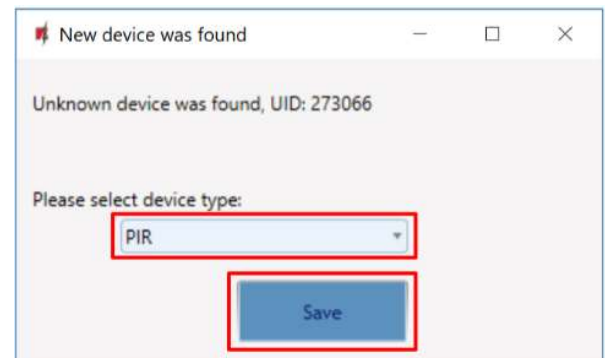
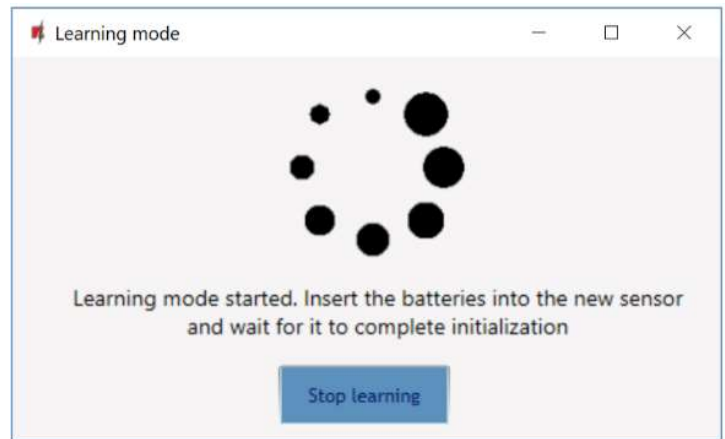
All wireless sensors can be linked simultaneously.





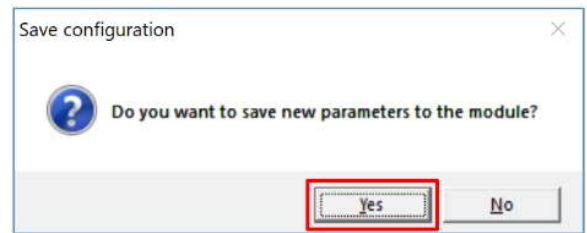
When enrolling sensors, the **RF-HW** module must be at least 1 m from the sensors.

1. The “**LEARN**” LED on the **RF-HW** module will flash.
2. **RF-HW** module - switches to learning mode. **TrikdisConfig** will open the sensor binding window.
3. Insert a battery into the wireless sensor (PIR, magnetic contact, flood detector, smoke detector, glass break detector, vibration sensor). On the **RF-HW** module, the “**LEARN**” LED will flash yellow for a short time (this indicates that the sensor is enrolled). A new window will open in **TrikdisConfig**, in which you need to specify the type of sensor (PIR, magnetic contact, flood detector, smoke detector, glass break detector, vibration sensor).
4. Click “**Save**”.
5. The sensor must be assigned a “**Zone Number**” and a “**Zone definition**”.
6. Click “**Save**”.
7. Wireless sensor is included in the list of sensors.
8. The “**UID**” number must match the serial number of the sensor shown on the sticker on the sensor board.
9. If you need to add the next sensor, you need to insert a battery into it. And make the settings described above.
10. Click “**Stop learning**” to complete the registration of wireless sensors.



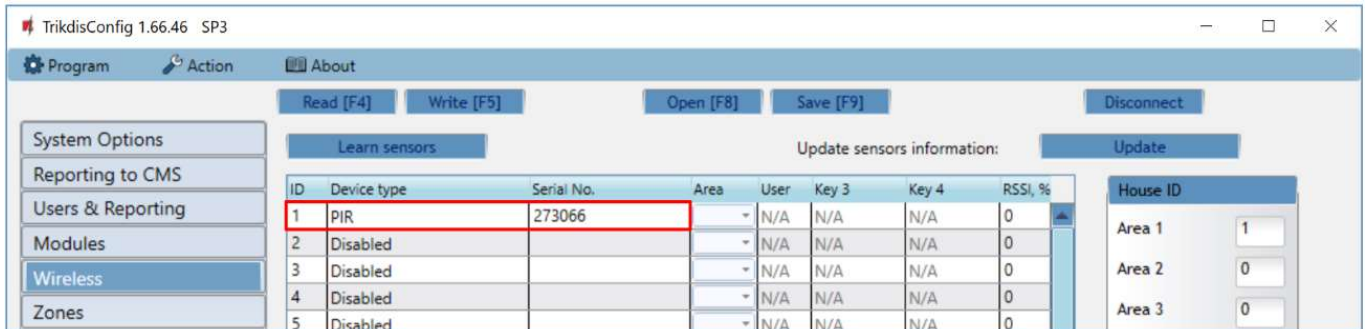


- Click **“Yes”** for the sensors to be written to the **“FLEXi” SP3** control panel.

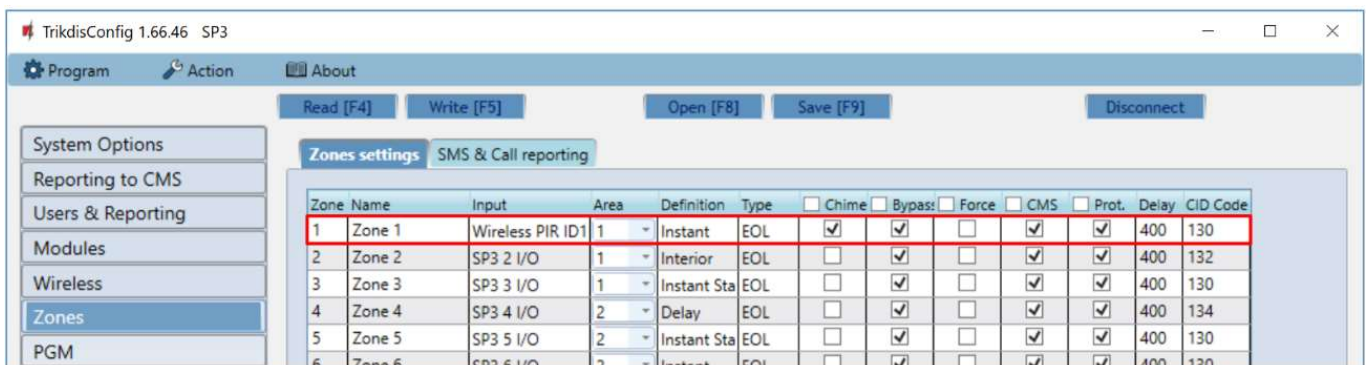


Wait a few minutes. Click **Read [F4]**.

**TrikdisConfig** will display a list of registered wireless sensors in the **“Wireless”** window. The **“Serial No.”** field will list the serial number that must match the sensor serial number written on the back of the case or on the sensor board.



Check that the sensors are correctly assigned to the **“Zones”** and **“Areas”** of the control panel (**“Zones”** window).



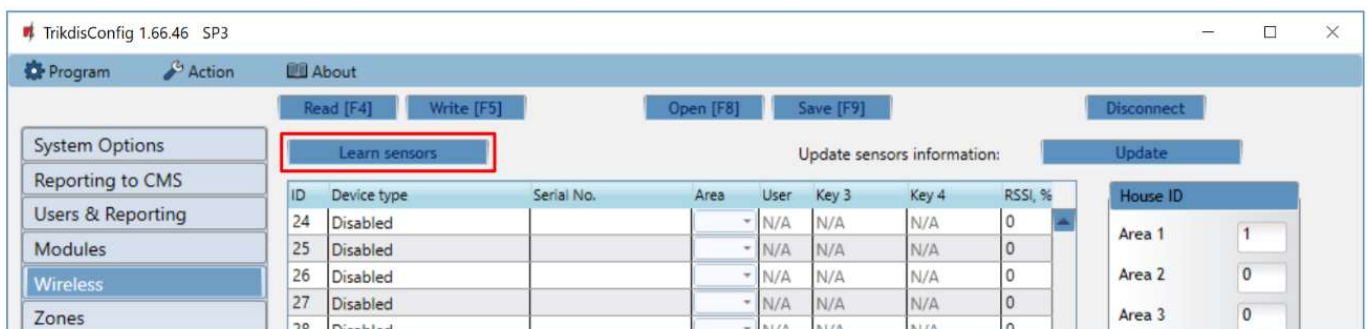
If you set zone **“Type”** EOL-T, then the sensor tamper monitoring mode will be enabled.

**Note:** To delete wireless sensors from the **“FLEXi” SP3**’s memory:

- Launch **TrikdisConfig**.
- Connect the **„FLEXi“ SP3** to a computer using a USB Mini-B cable or connect to the **„FLEXi“ SP3** remotely. Click the **Read [F4]** button.
- In the **TrikdisConfig** window **“Wireless”**, in the column **“Device type”**, select **“Disabled”** instead of the **“Wireless sensor”** that you wish to delete and click **Write [F5]**. The wireless sensor is now removed from the **“FLEXi” SP3**’s memory.

## 3 Linking a wireless remote controller (keyfob)

Click **“Learn sensors”**.



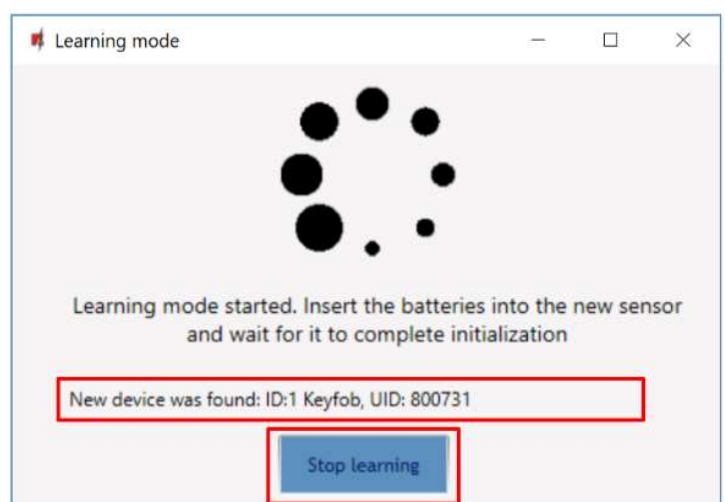
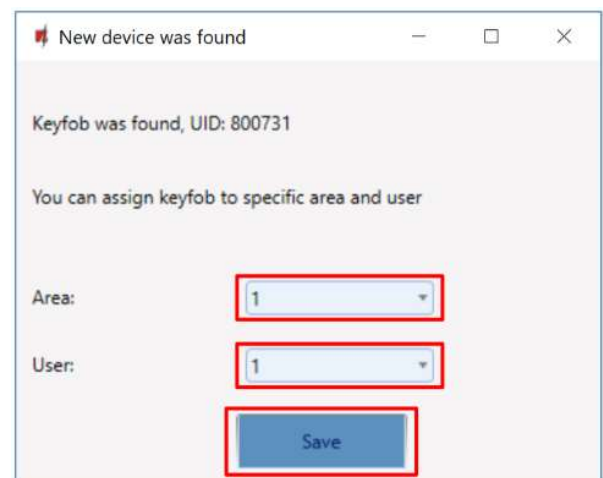




All wireless keyfobs can be linked simultaneously.

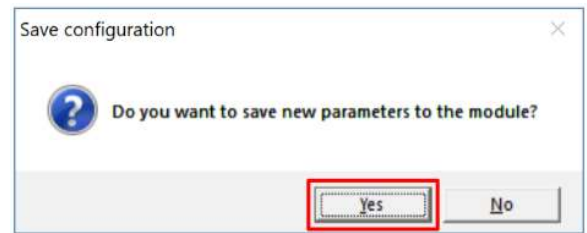
**When enrolling keyfob, the *RF-HW* module must be at least 1 m from the keyfob.**

1. The “**LEARN**” LED on the *RF-HW* module will flash.
2. *RF-HW* module - switches to learning mode. *TrikdisConfig* will open the sensor binding window.
3. Press and hold any button on the keyfob for a few seconds. Release the button. On the *RF-HW* module, the “**LEARN**” LED will flash yellow for a short time (this indicates that the keyfob is enrolled). A new window will open in *TrikdisConfig*, in which you need to specify the device type “**Keyfob**”.
4. Click “**Save**”.
5. In the “**Area**” field, specify the partition of the security system that the keyfob will control (Arm / Disarm). In the “**User**” field, enter the user number to which the keyfob will be assigned.
6. Click “**Save**”.
7. Wireless keyfob is included in the list.
8. The “**UID**” number must match the serial number of the keyfob, which is indicated on the sticker on the back of the keyfob.
9. If you need to add the next keyfob, you need press and hold any button on the keyfob for a few seconds. Release the button. And make the settings described above.
10. Click “**Stop learning**” to complete the registration of wireless keyfobs.



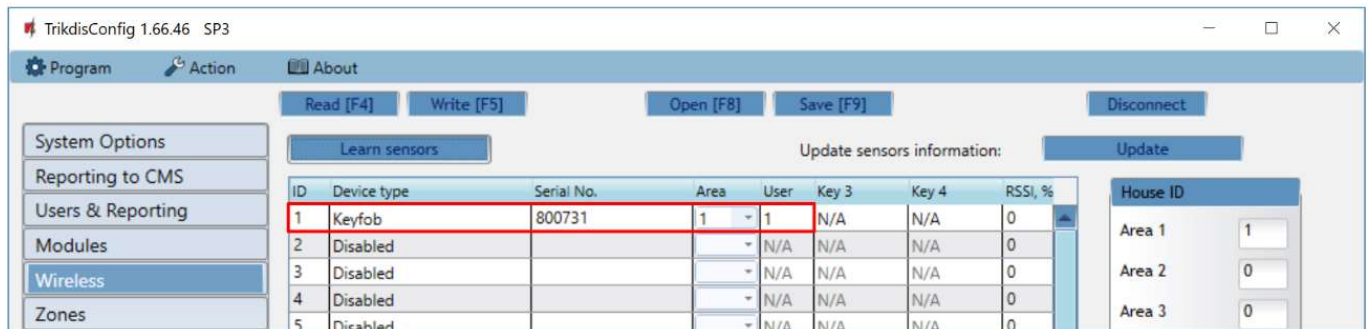


- Click **“Yes”** to write the settings to the **“FLEXi” SP3** control panel.

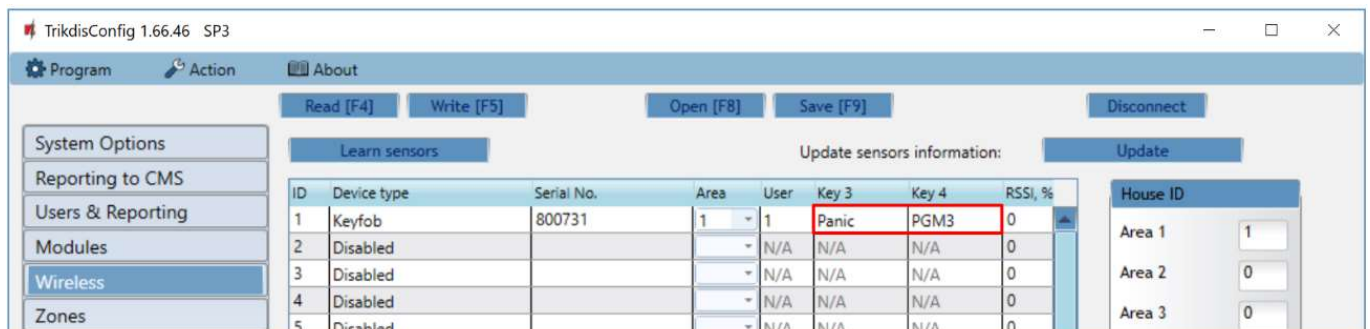


Wait a few minutes. Click **Read [F4]**.

In TrikdisConfig, in the **“Wireless”** window in the **“Device type”** field, the name **“Keyfob”** should appear. The number should appear in the **“Serial No”** field and should match the keyfob serial number written on the case.



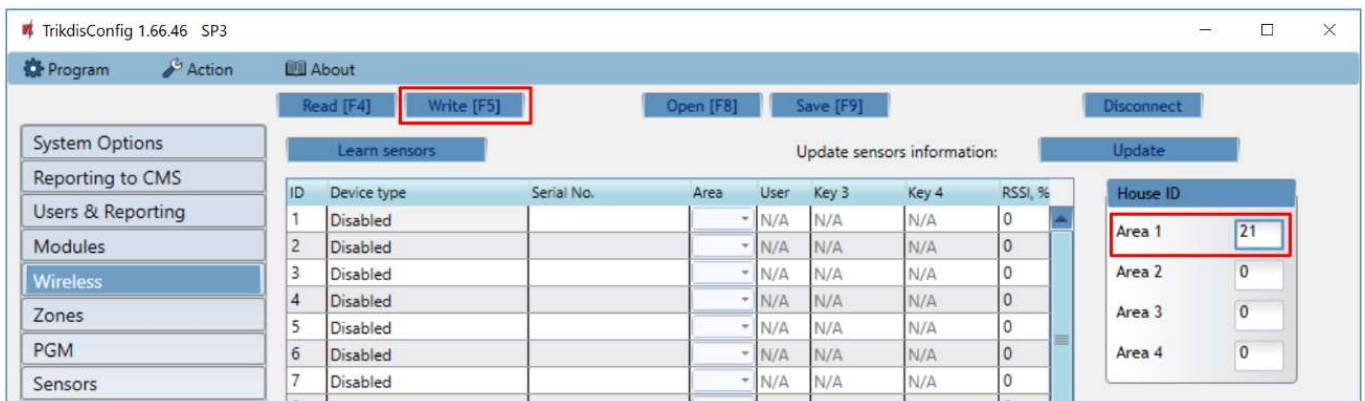
1 and 2 keyfob buttons have fixed functions (Arm/Disarm). You can assign additional functions to the keyfob’s buttons 3 and 4 (Arm, Disarm; Silent alarm; Panic alarm; PGM control).



- Note:** To delete wireless keyfob from the **“FLEXi” SP3**’s memory:
- Launch **TrikdisConfig**.
  - Connect the **„FLEXi“ SP3** to a computer using a USB Mini-B cable or connect to the **„FLEXi“ SP3** remotely. Click the **Read [F4]** button.
  - In the **TrikdisConfig** window **“Wireless”**, in the column **“Device type”**, select **“Disabled”** instead of the **Keyfob** that you wish to delete and click **Write [F5]**. The keyfob is now removed from the **„FLEXi“ SP3**’s memory.

## 4 Linking a wireless siren

- Remove the siren cover.
- Use DIP switches 4-8 to set the appropriate **“House ID”** code (01-31) for the siren.
- Enter the siren **“House ID”** code in **TrikdisConfig**. The wireless siren can be assigned to several areas.



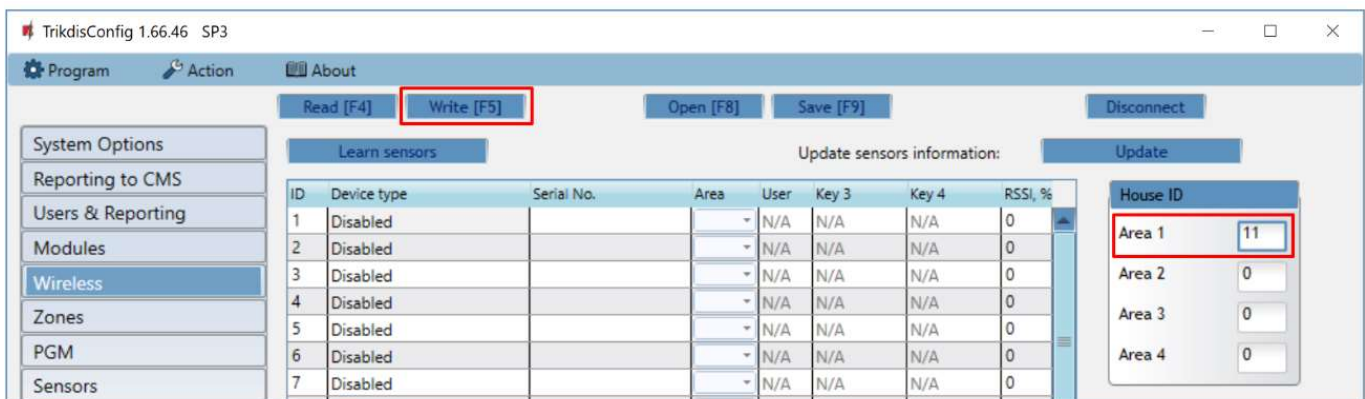
Click **Write [F5]** after making the changes.

**Note:** To delete wireless siren from the „FLEXi“ SP3's memory:

1. Launch **TrikdisConfig**.
2. Connect the „FLEXi“ SP3 to a computer using a USB Mini-B cable or connect to the „FLEXi“ SP3 remotely. Click the **Read [F4]** button.
3. In the **TrikdisConfig** window „Wireless“, in the column „House ID“, enter „0“ instead of the „House ID“ code and click **Write [F5]**. The wireless siren is now removed from the „FLEXi“ SP3's memory.

## 5 Linking a wireless keypad 5828

1. Press and hold the [1] and [3] keys simultaneously for five (5) seconds. The display alternately flashes „00“ and two dashes (- -).
2. Press [1]. The display alternately flashes „t1“ and the 2-digit „House ID“ code.
3. Enter the two-digit „House ID“ code (01-31).
4. Press [#].
5. Press [\*] [\*].
6. Enter the same „House ID“ code in **TrikdisConfig**.



Click **Write [F5]** after making the changes.

**Note:** To delete wireless keypad from the „FLEXi“ SP3's memory:

1. Launch **TrikdisConfig**.
2. Connect the „FLEXi“ SP3 to a computer using a USB Mini-B cable or connect to the „FLEXi“ SP3 remotely. Click the **Read [F4]** button.
3. In the **TrikdisConfig** window „Wireless“, in the column „House ID“, enter „0“ instead of the „House ID“ code and click **Write [F5]**. The keypad is now removed from the „FLEXi“ SP3's memory.