

FLEXi

SP3

Adaptable Security Panel

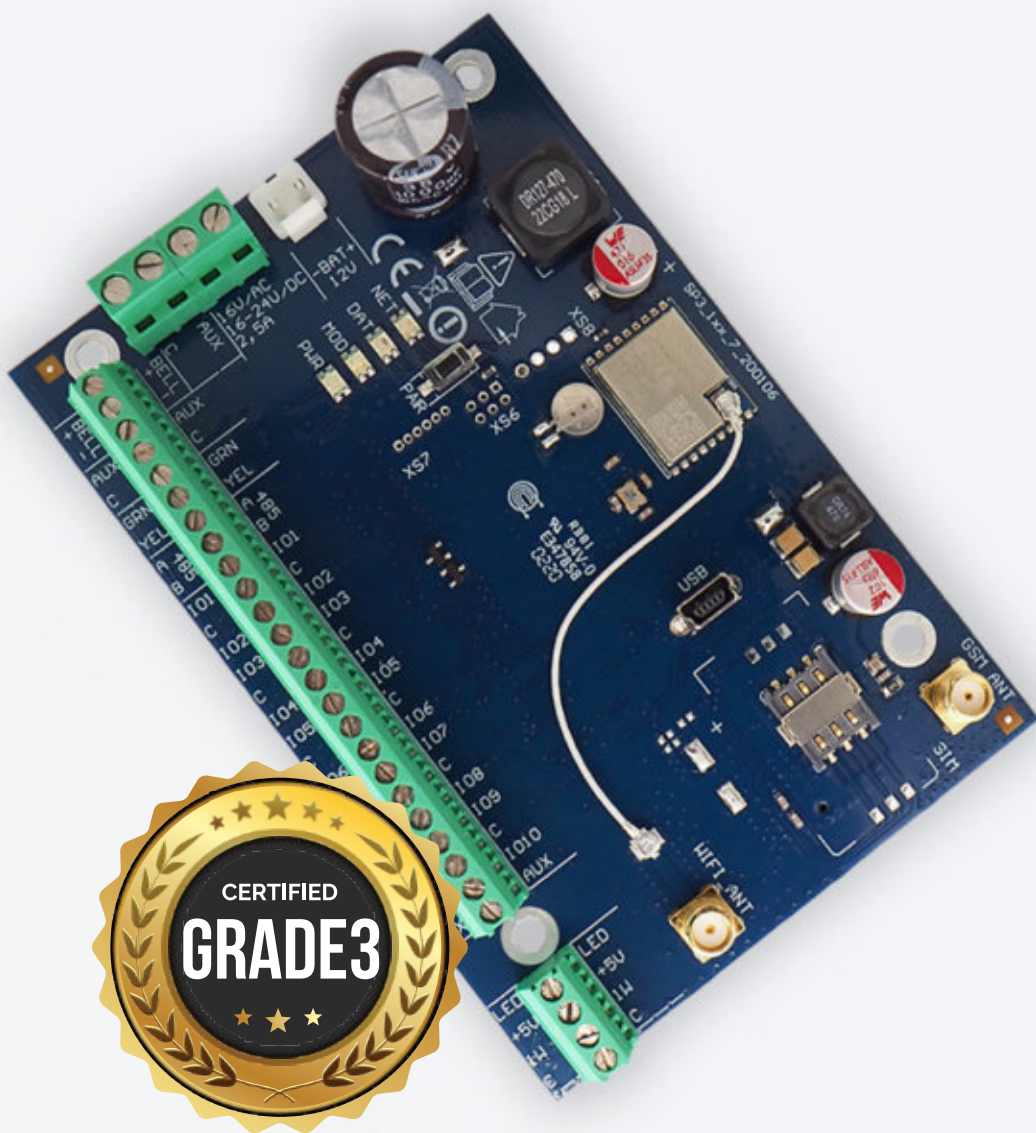
Wi-Fi
+4G

Ethernet
+4G

Wi-Fi
+2G

Wi-Fi
+Ethernet

Wi-Fi



Adaptability and Speed

Designed to combine the best features of TRIKDIS security control panels, communicators and controllers

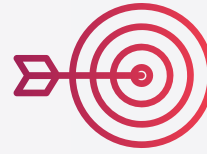
Security Control Panel FLEXi SP3

FLEXi is a hybrid security control panel with on-board **WiFi** and **Cellular** or **Ethernet** connectivity. Unique feature set allows you to use this panel both in intrusion alarm and automation installations.



Old System Takeover

Replace any alarm panel without changing resistors in each sensor. In **TrikdisConfig** you can **set** what **resistor nominal** value is used with FLEXi. This saves a lot of time during a retro-fit installation.



Speed

Integrated **4G, WiFi** and Ethernet **allows to save precious seconds** in case of a break-in.

Fast connectivity also allows for **faster remote configuration and remote control**.



Cost Effective

Integrating the communicator into the alarm panel board allows to **save a lot in the final price**. WiFi allows to **save on cellular data** costs. Remote configuration allows to add users, change passwords and other settings without visiting the site.



Adaptability

FLEXi expandable up to **32 zones** and up to **16 OUTs**. Also add additional **VHF/UHF** band radio or **SigFox** channel and achieve reliable **multi-path** communication.



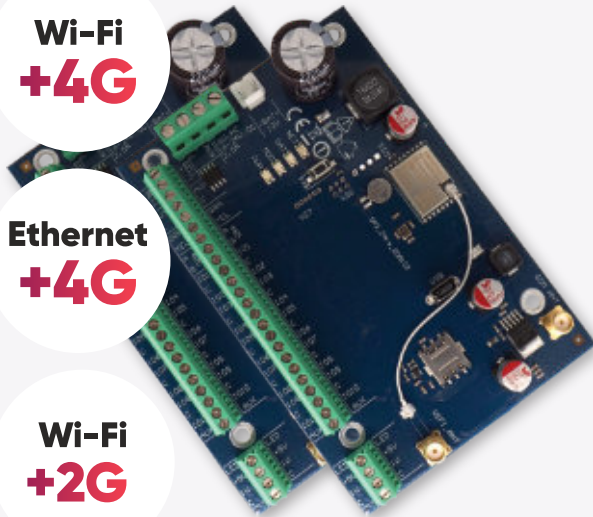
Modifications

Tailored to individual cases, different connection requirements, and **meets different user needs** so you will make a great solution every time.

Wi-Fi
+4G

Ethernet
+4G

Wi-Fi
+2G



FLEXi can be ordered with **2G or 4G** modems.

WiFi or Ethernet should be used **as the primary channel**. If it stops working, connection will switch automatically to cellular.



Wi-Fi
+Ethernet

FLEXi makes it possible to use redundant Internet connection by connecting to networks of two independent communications providers: **the main — via WiFi, and the backup — via Ethernet**. If connection of one provider fails, the security panel will stay connected.



Wi-Fi

It is not **necessary to lay a IP cable for connection to the router**. The control panel is ready to operate straight out the box.



Wi-Fi



CELLULAR



VHF/UHF



ETHERNET



sigfox

Remote control

Offer your clients a **app** without investing in its development. This will increase the value and appeal of your company's security services.



Remote control and notifications via Protegus app

Optional notifications:



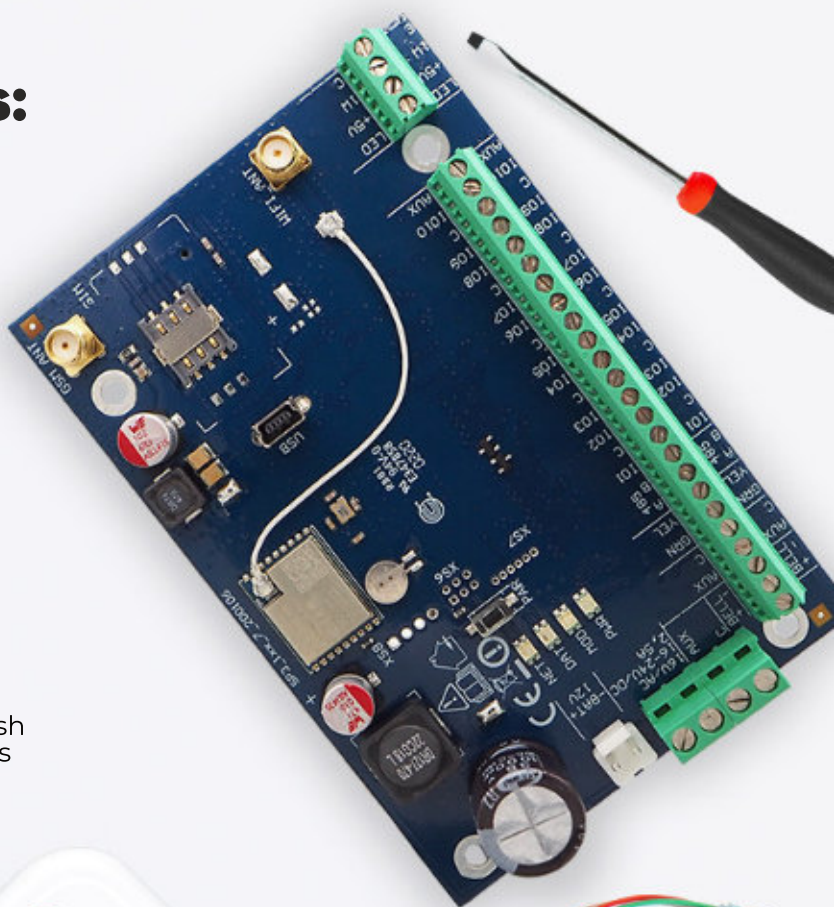
via SMS



via call



FLEXi can send multiple notifications: app push messages, SMS text messages and phone calls (working SIM card required).



FLEXi

SP3 control panel board



FLEXi SP3 control panel board

Wire for connecting battery

Resistor 2,2 kΩ

Plastic spacer (mounting parts)

Two antennas, cellular and Wi-Fi with 2,5 m long cables



FLEXi Kits

When it comes to new installations we have a decent approach to it. We prepared **FLEXi kits for fast and convenient installations**, all in one metal housing with carefully selected equipment for full FLEXi potential.



FLEXi SP3 control panel board, built into metal housing (200 x 210 x 80 mm)

Metal housing K02 with **APV35-24 impulse power supply**

2,2 and 4,7 kΩ resistor bundle

Two antennas, cellular and Wi-Fi with 2,5 m long cables

Wire for connecting battery

Has **tamper sensor**

Terminal block with **3,15 A fuse**



FLEXi SP3 control panel board, built into metal housing (285 x 280 x 80 mm)

Metal housing K01 with **40 VA transformer**

2,2 and 4,7 kΩ resistor bundle

Two antennas, cellular and Wi-Fi with 2,5 m long cables

Wire for connecting battery

Has **tamper sensor**

Terminal block with **0,5 A fuse**

Compatible Keypads



TRIKDIS

SK232 LED W



CROW

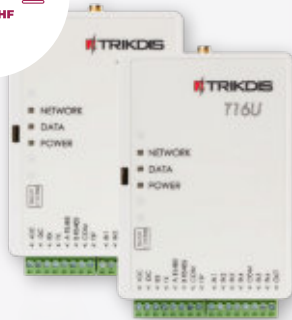
CR16 / CR-LCD



P ▲ R ▲ D O X

**K636 / K10H(V) / K32 LCD / K32+ LCD / K32 LED /
K32+ LED / K35/ TM70 / TM 50**

Compatible Devices



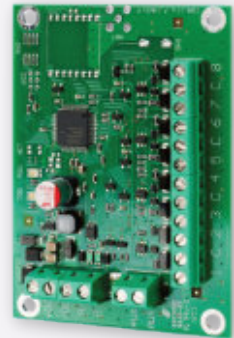
Communicator T16

Add additional radio channel for most secure communication to Central Monitoring Station.



Module SF485

Add additional communication channel through SigFox radio network



Expander iO8

With iO-8 **FLEXi** obtains **32 zones** and **16 OUTs**

Make it Wireless

With RF-SH module **FLEXi** can easily connect to **Crow's wireless security sensors**



Shepherd series

SH-Sirint / SH-KP / SH-PIR / SH-MAG / SH-FLOOD / SH-CRT / SH-SMK / SH-GBD



Freewave2 series

FW2-Panic N / FW2-Remote N / FW2-GBD N / FW2-EDS3000AM N with Anti-Masking / FW2-Neo N / FW2-Mag N / FW2-Flood N / FW2-Curtain N / FW2-Smoke N



Power supply	16-24 V, 2,5 A AC
Current consumption	Up to 50 mA (stand-by), Up to 200 mA (short-term, while sending)
WiFi frequency, protocol, encryption	2,4 GHz, 802.11 b/g/n, WPA, WPA2, WPA mixed
WiFi network configuration	DHCP or manual
SIM card	1, NANO size
GSM/GPRS modem	Quad-band
4G modem	4G (LTE-FDD) with migration to 3G (WCDMA) and 2G (GSM/EDGE) feature
Ethernet port	RJ-45 connector
Event transmission directions	<ul style="list-style-type: none"> - To main and backup receivers of 2 different security companies; - iOS/Android Protegus mobiliąsias programas; - To 8 mobile phones via SMS messages. - Calls to 8 mobile phones. Vocal event notification
Event transmission channels	2G or 4G, WiFi, LAN (with module E485), SMS, Voice call, VHF/ UHF radio (with transmitter T16)
Programmable communication channel/direction priority	Yes
Message encryption	TRK AES 128, SIA IP AES 128 / Contact ID codes
Internal clock	Yes
Events log memory	1000 entries, oldest deleted automatically.
User codes	40
Duress code	Yes
No. of partitions	8
No. of zones	10 (20 if set ATZ), expandable up to 32 with expanders
No. of PGM outputs	2 (12 if IO terminals are set as OUT) Expandable to 16 with expanders
No. of keypads	8
No. of RFID readers	2 (Wiegand 26/34)
No. of compatible temperature sensors	8
No. of compatible electronic (iButton) keys	40
Compatible wireless systems	Crow Shepherd, Freewave2 via extra add-on RF module
Operating environment	Temperature from -10 °C to +50 °C, relative humidity 80%, at +20 °C, no condensation.

FLEXi

Adaptable Security Panel

SP3

